

VORTAC SWL	APP CRS	Rwy Idg	4808
112.4	190°	TDZE	39
Chan 71		Apt Elev	40

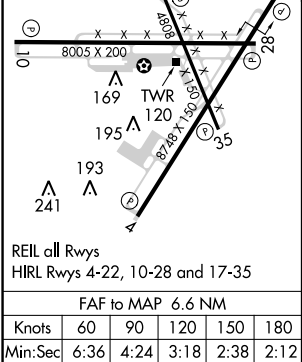
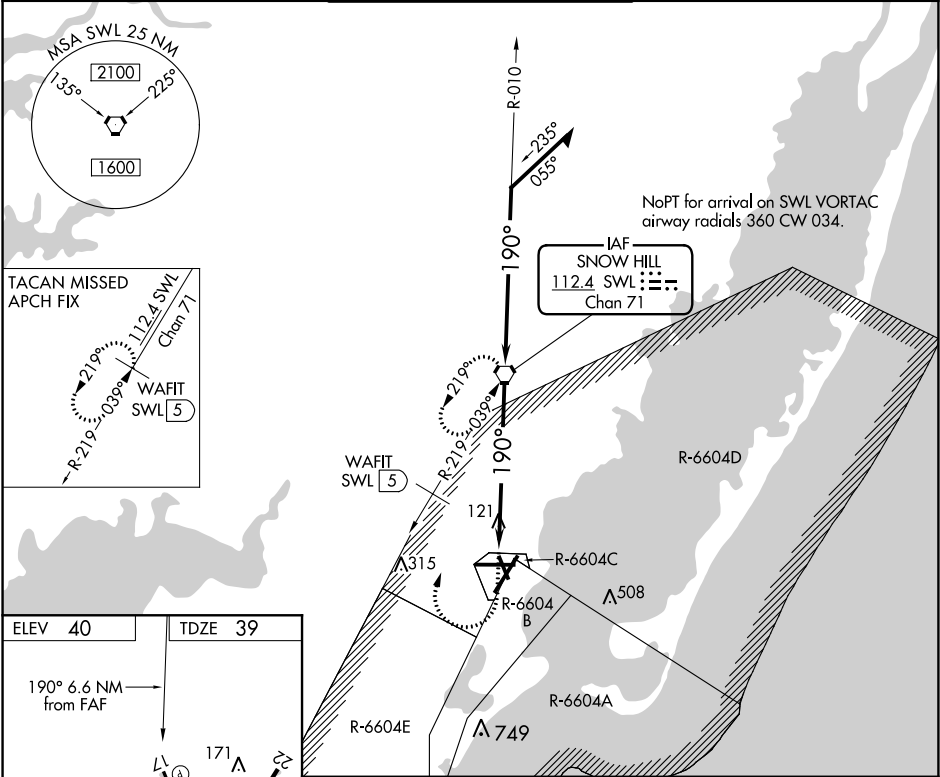
VOR or TACAN RWY 17

Wallops Flight Facility (WAL)

When local altimeter setting not received, use Salisbury altimeter setting and increase all MDA 60 feet and S-17 Cats C/D and Circling Cat C visibility ¼ mile. Helicopter visibility reduction below ¾ SM NA.

MISSED APPROACH: Climb to 600 then climbing right turn to 2000 direct SWL VORTAC and hold. (TACAN aircraft climb to 600 then climbing right turn to 2000 on heading 300° and SWL VORTAC R-219 to WAFIT/SWL 5 DME and hold SW, LT 039° inbound.)

ASOS	PATUXENT APP CON ★	Wallops Tower ★	GND CON	CLNC DEL
119.175	127.95 314.0	126.5 (CTAF) 0 306.975 (CTAF) 0	127.875 269.325	121.7



ELEV 40	TDZE 39
190° 6.6 NM from FAF	
600 2000 SWL	SWL VORTAC
190° 2000	Remain within 10 NM
SWL 6.6	010° 190° 2000
2.76° TCH 45	VGSI and descent angles not coincident (VGSI Angle 3.00/TCH 63).
6.6 NM	
CATEGORY	A B C D
S-17	540-1 501 (500-1) 540-1 501 (500-1)
CIRCLING	600-1 560 (600-1) 620-1 580 (600-1) 860-2 820 (900-2)