

DOVER, DELAWARE

# RNAV (GPS) RWY 32

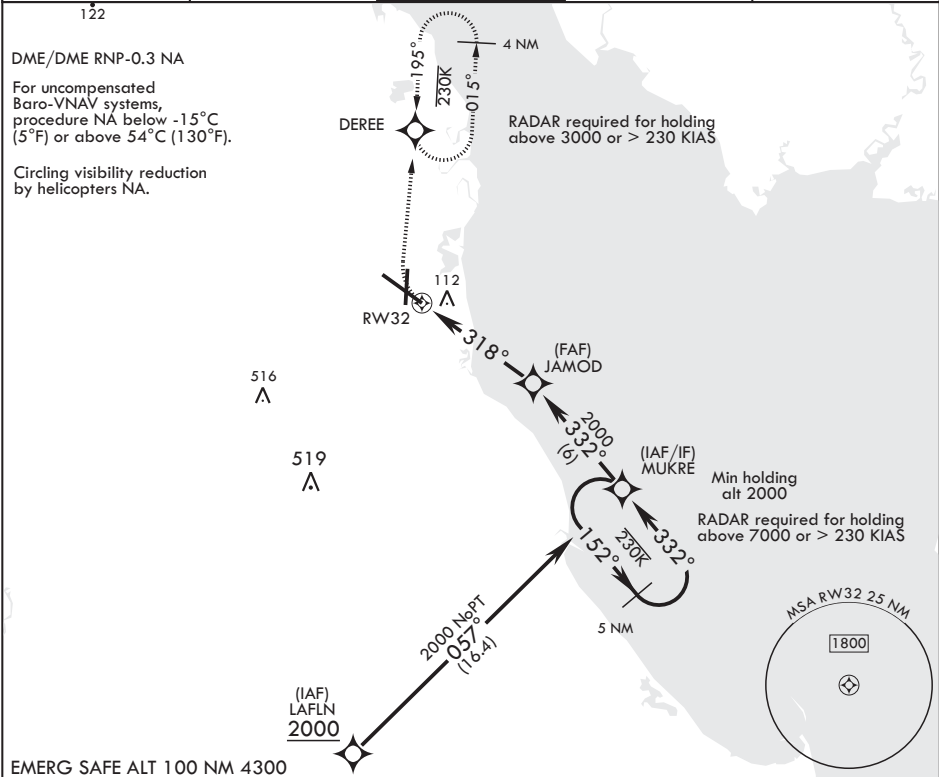
WAAS CH 91360 W32A	APCH CRS 318°	Rwy ldg TDZE 26 Arpt Elev 29
--------------------------	------------------	------------------------------------



AL-562 (USAF)

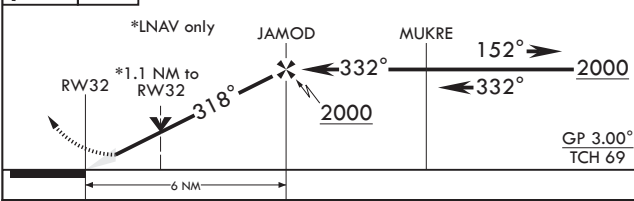
DOVER AFB (KDOV)

	MISSED APPROACH: Climbing right turn to 2000 direct DERE and hold, continue climb-in-hold to 2000.
---	--

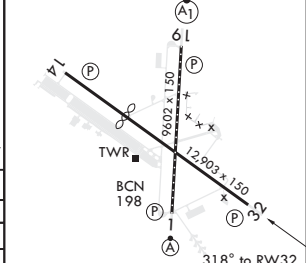
ATIS 127.825 273.5	APP CON 132.425 257.875	TOWER 126.35 279.625	GND CON 118.875 225.4	CLNC DEL 125.55 289.4
-----------------------	----------------------------	-------------------------	--------------------------	--------------------------



2000	DERE	5 NM holding pattern	ELEV 29	TDZE 26
			Rwy 14 ldg 8652'	



CATEGORY	A	B	C	D
LPV DA	276-3/4	250	(300-3/4)	
LNAV/VNAV DA	456-1 1/4	430	(500-1 1/4)	
LNAV MDA	460-1	434 (500-1)	460-1 1/4	434 (500-1 1/4)
CIRCLING	500-1 471 (500-1)	520-1 491 (500-1)	540-1 1/2 511 (600-1 1/2)	580-2 551 (600-2)



REIL Rwy 32  
HIRL all Rwys  
TDZL/CL Rwy 1

DOVER, DELAWARE

39°08'N - 75°28'W

DOVER AFB (KDOV)

Amtr 4 05DEC19

# RNAV (GPS) RWY 32

NE-3, 31 DEC 2020 to 28 JAN 2021

NE-3, 31 DEC 2020 to 28 JAN 2021