

CAMP SPRINGS, MARYLAND

TACAN RWY 1L

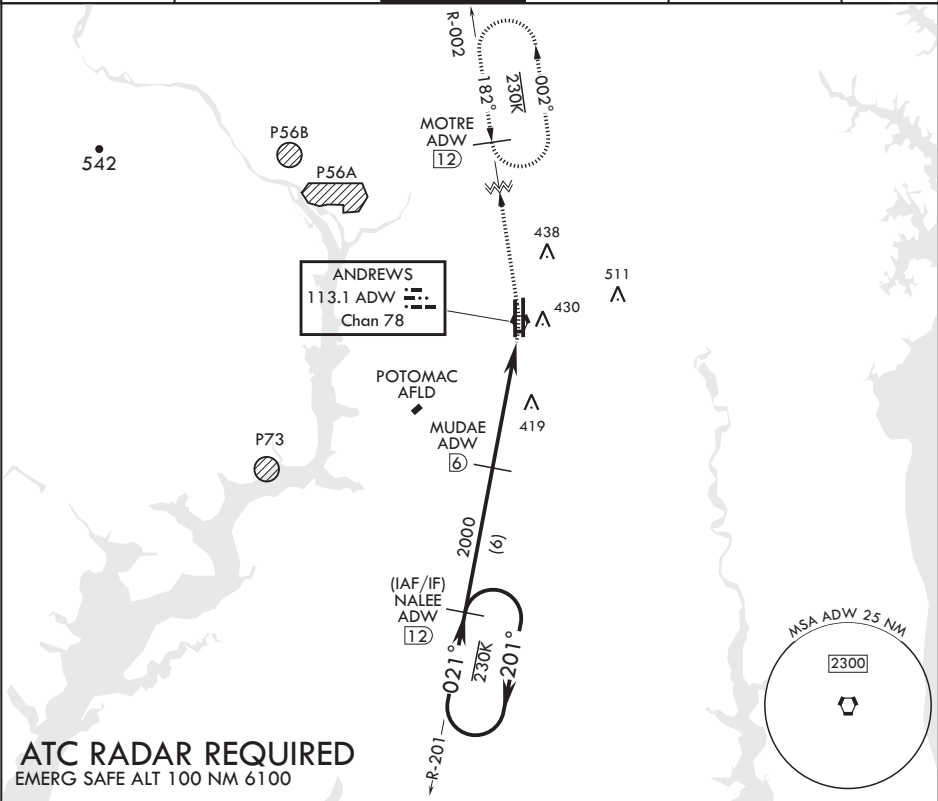
VORTAC ADW 113.1 Chan 78	APCH CRS 021°	Rwy Idg TDZE Arpt Elev	9318 261 280
--------------------------------	------------------	------------------------------	--------------------

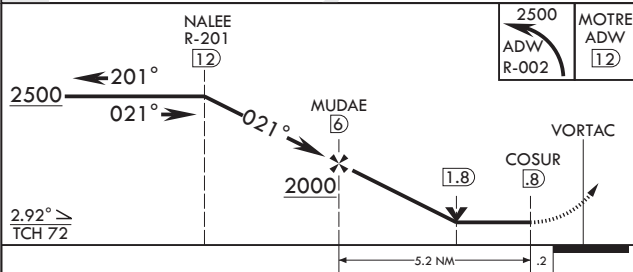
AL-561 (USAF)

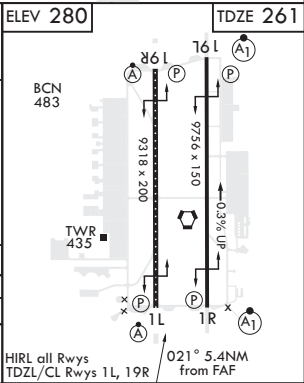
JOINT BASE ANDREWS (KADW)

⚠ * When ALS inop, increase CAT AB RVR to 55, vis to 1 mile, CAT CDE vis to 1 3/8 miles. ** Circling not authorized W of Rwy 1L-19R.	ALSF-2 	MISSED APPROACH: Climb to 2500 via ADW VORTAC R-002 to MOTRE/ADW 12 DME and hold.
--	---	---

ATIS 133.675 251.05	POTOMAC APP CON 128.0 335.5	TOWER 118.4 349.0	GND CON 121.8 275.8	CLNC DEL 127.55 285.475	CPDLC
------------------------	--------------------------------	----------------------	------------------------	----------------------------	-------



		2500 ADW R-002	MOTRE ADW 12	ELEV 280	TDZE 261
CATEGORY	A	B	C	D	E
S-1L*	720/24	459 (500-1/2)	720/45	459	(500-3/8)
C CIRCLING**	780-1	501 (600-1)	780-1 1/2 501 (600-1 1/2)	840-2	561 (600-2)



CAMP SPRINGS, MARYLAND

38°49'N - 76°52'W

JOINT BASE ANDREWS (KADW)

Amdt 1 02MAR17

TACAN RWY 1L

NE-3, 31 DEC 2020 to 28 JAN 2021

NE-3, 31 DEC 2020 to 28 JAN 2021