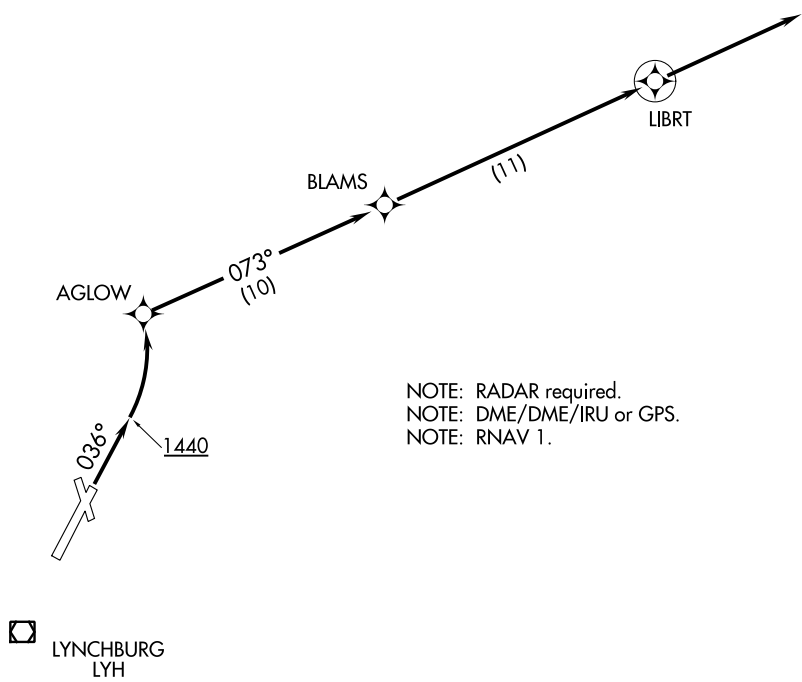


ATIS 119.8
GND CON
121.9
LYNCHBURG TOWER ★
127.65 (CTAF) 257.8
ROANOKE DEP CON
135.0 254.325

TAKEOFF MINIMUMS:
Rwys 17, 22, 35: NA-ATC.
Rwy 4: Standard with minimum
climb of 500' per NM to 4000.

TOP ALTITUDE:
4000



NOTE: RADAR required.
NOTE: DME/DME/IRU or GPS.
NOTE: RNAV 1.

NOTE: Chart not to scale.

DEPARTURE ROUTE DESCRIPTION

TAKEOFF RUNWAY 4: Climb heading 036° to 1440, then left turn direct AGLOW, then on depicted route to LIBRT, then on heading 073°, expect vectors on course. Maintain 4000 or as assigned by ATC. Expect filed altitude 10 minutes after departure.