

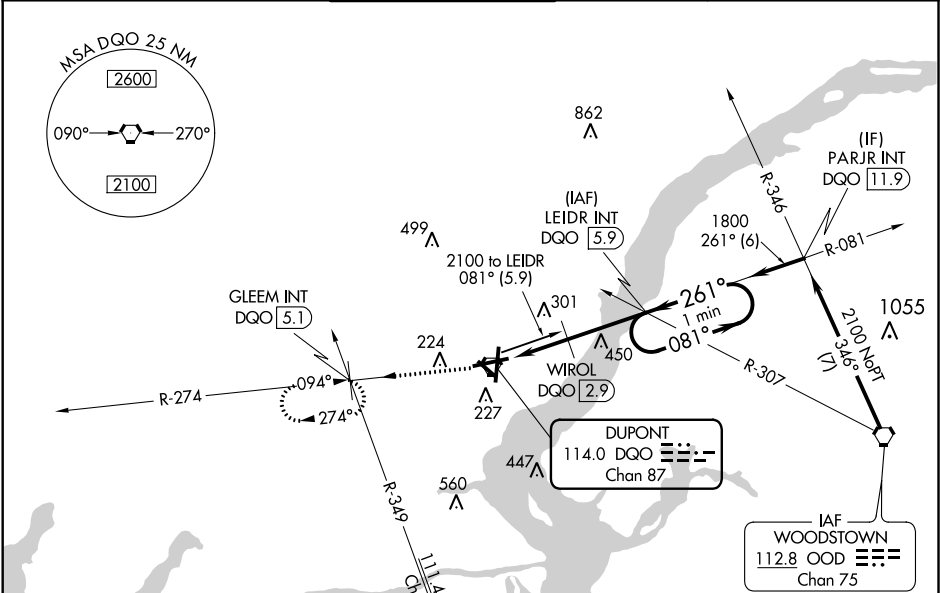
VORTAC DQO	APP CRS	Rwy Idg	7000
114.0	261°	TDZE	72
Chan 87		Apt Elev	80

VOR RWY 27  
NEW CASTLE (ILG)

**⚠** Helicopter visibility reduction below ¾ SM NA. When local altimeter setting not received, use Philadelphia Intl altimeter setting and increase all MDA 60 feet; increase S-27 Cat B visibility ¼ mile and increase S-9 Cats C and D visibility ½ mile; increase Circling Cats B and D visibility ¼ mile and increase Circling Cat C ½ mile; WIROL FIX minimums S-27 increase Cats C and D visibility ¼ mile, and increase Circling Cat C ½ mile.

**MISSED APPROACH:** Climb to 2000 on DQO VORTAC R-274 to GLEEM INT/DQO 5.1 DME and hold.

ATIS 123.95	PHILADELPHIA APP CON 118.35 323.1	WILMINGTON TOWER ★ 126.0 (CTAF) 352.05	GND CON 121.7 275.8	CLNC DEL 119.95	UNICOM 122.95
----------------	--------------------------------------	---	------------------------	--------------------	------------------



ELEV 80	D	TDZE 72
REIL Rwy 9, 27 and 19 HIRL Rwy 9-27 and 1-19 MIRL Rwy 14-32		
FAF to MAP 5.9 NM		
Knots	60	90 120 150 180
Min:Sec	5:54	3:56 2:57 2:22 1:58

2000 DQO R-274		GLEEM INT		LEIDR INT DQO 5.9		One Minute Holding Pattern	
WIROL DQO 2.9		DQO VORTAC		261°		1800	
800*		3.00 TCH 54		081°		2100	
-0.6		-2.3		3 NM			
CATEGORY	A	B	C	D			
S-27	800-1	728 (800-1)	800-2	728 (800-2)			
CIRCLING	800-1	720 (800-1)	800-2	720 (800-2)	800-2 ¼	720 (800-2 ¼)	
WIROL FIX MINIMUMS (DME REQUIRED)							
S-27	560-1	488 (500-1)	560-1 ¾	488 (500-1 ¾)			
CIRCLING	560-1	480 (500-1)	600-1 ½	520 (600-1 ½)	640-2	560 (600-2)	