

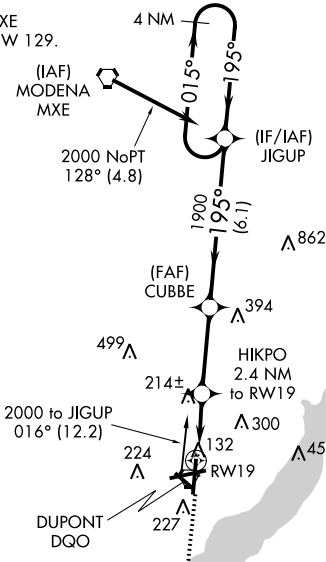
WAAS CH 82115 W19A	APP CRS 195°	Rwy Idg 7012 TDZE 71 Apt Elev 80
--	------------------------	---

RNAV (GPS) RWY 19

NEW CASTLE (ILG)

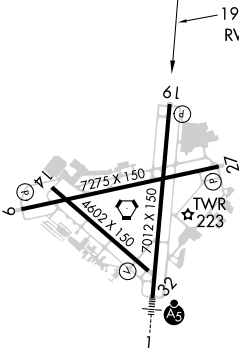
<div><div>▼</div>Baro-VNAV NA when using Philadelphia Intl altimeter setting. For uncompensated Baro-VNAV systems, LNAV/VNAV NA below -15°C (5°F) or above 49°C (120°F).</div> <div><div>▲</div>DME/DME RNP-0.3 NA. Visibility reduction by helicopters NA. When local altimeter setting not received, use Philadelphia Intl altimeter setting: increase LPV DA to 425, LNAV/VNAV DA to 592, and all MDA 60 feet; increase LPV all Cats and LNAV Cat D visibility ¼ mile.</div>				MISSED APPROACH: Climb to 2000 direct FESER and hold.	
ATIS 123.95	PHILADELPHIA APP CON 118.35 323.1	WILMINGTON TOWER ★ 126.0 (CTAF) 352.05	GND CON 121.7 275.8	CLNC DEL 119.95	UNICOM 122.95

Procedure NA for arrival on MXE
VORTAC airway radials 056 CW 129.



Procedure NA for arrival on DQO VORTAC
airway radials 053 CW 068.

ELEV 80	D	TDZE 71
---------	----------	---------



REIL Rwy 9, 27 and 19
HIRL Rwy 9-27 and 1-19
MIRL Rwy 14-32

2000 ↑ FESER		4 NM Holding Pattern			
* LNAV only.		JIGUP			
RW19		CUBBE		2000	
HIKPO 2.4 NM to RW19		195°		015° → ← 195°	
880*		1900		GP 3.00° TCH 55	
2.4 NM		3.1 NM		6.1 NM	
CATEGORY	A	B	C	D	
LPV DA	371-1 300 (300-1)				
LNAV/ VNAV DA	538-1¼ 467 (500-1¼)				
LNAV MDA	480-1	409 (400-1)	480-1¼	409 (400-1¼)	
CIRCLING	540-1	460 (500-1)	600-1½ 520 (600-1½)	640-2 560 (600-2)	