

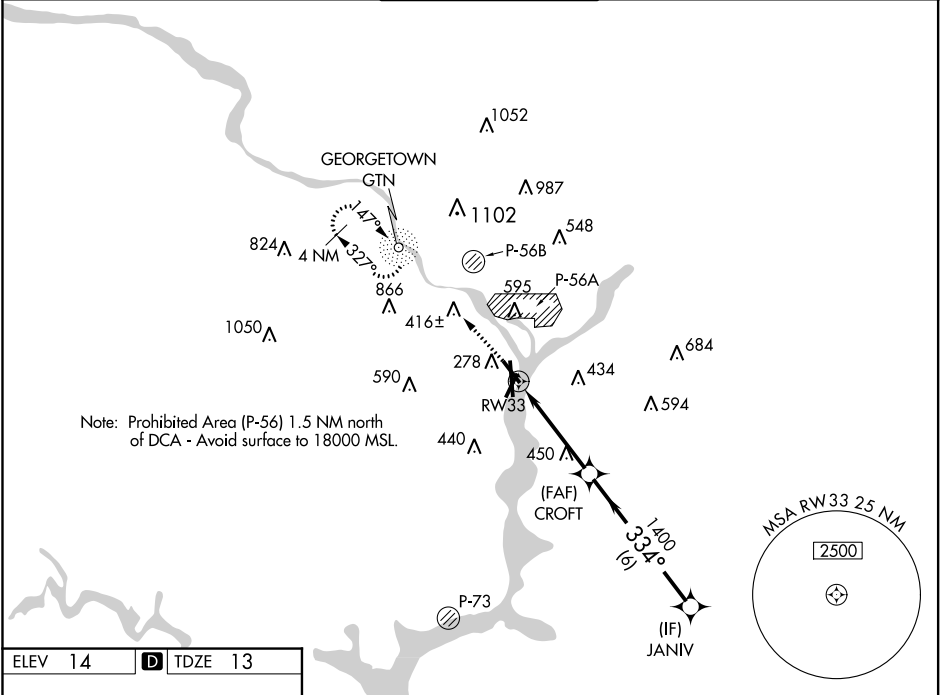
WAAS CH <b>90123</b> <b>W33A</b>	APP CRS <b>334°</b>	Rwy Idg <b>5204</b> TDZE <b>13</b> Apt Elev <b>14</b>
--	------------------------	---

RNAV (GPS) RWY 33

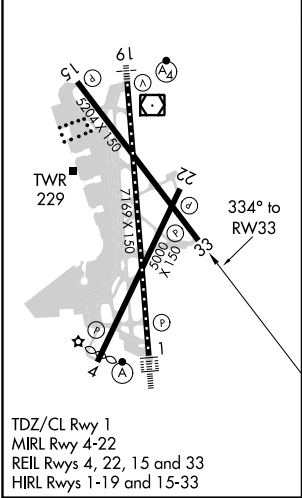
RONALD REAGAN WASHINGTON NATIONAL (DCA)

<div><div>▼</div><div>▲</div></div> <div>For uncompensated Baro-VNAV systems, LNAV/VNAV NA below -9°C (16°F) or above 54°C (130°F). Circling NA northeast of Rwy 15-33. DME/DME RNP-0.3 NA.</div>	MISSED APPROACH: Climb to 2200 direct GTN NDB and hold, continue climb-in-hold to 2200.
---	---

D-ATIS <b>132.65</b>	POTOMAC APP CON <b>119.85 239.25</b> (WEST/SOUTH) <b>124.2 360.8</b> (EAST)	WASHINGTON TOWER <b>119.1 257.6</b>	GND CON <b>121.7 257.6</b>	CLNC DEL <b>128.25</b>	CPDLC
-------------------------	---	--	-------------------------------	---------------------------	-------



ELEV <b>14</b>	<b>D</b>	TDZE <b>13</b>
----------------	----------	----------------



2200	GTN	VGSi and RNAV glidepath not coincident (VGSi Angle 3.00/TCH 37).			
* LNAV only		JANIV			
RW33		CROFT			
* 2.1 NM to RW33		1400			
1400		334°			
2100		GP 3.00° TCH 55			
2.1 NM		6 NM			
CATEGORY	A	B	C	D	
LPV DA	263-¾ 250 (300-¾)				
LNAV/VNAV DA	609-2 596 (600-2)				
LNAV MDA	720-1	707 (800-1)	720-2	707 (800-2)	
CIRCLING	720-1	706 (800-1)	840-2½ 826 (900-2½)	900-3 886 (900-3)	

NE-3, 31 DEC 2020 to 28 JAN 2021

NE-3, 31 DEC 2020 to 28 JAN 2021