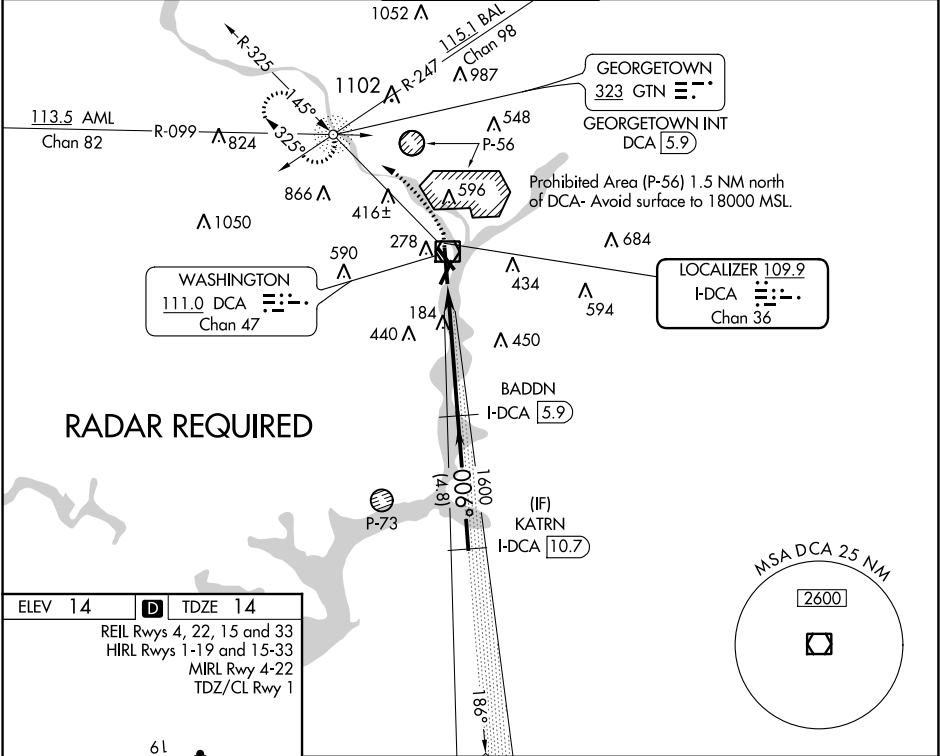



LOC/DME I-DCA	APP CRS	Rwy Idg	6869
109.9	006°	TDZE	14
Chan 36		Apt Elev	14

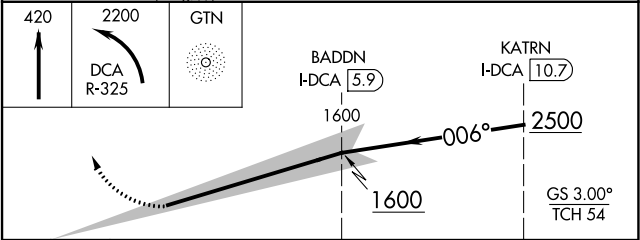
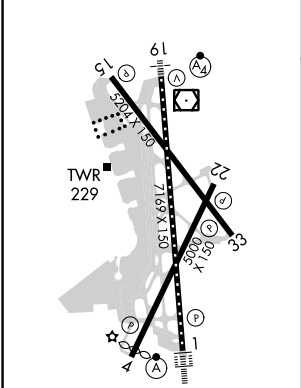
ILS RWY 1 (SA CAT I)

RONALD REAGAN WASHINGTON NATIONAL (DCA)

<div><div></div><div></div></div>	DME required. Requires specific OPSPEC, MSPEC or LOA approval and use of HUD to DH.			ALSIF-2 <div><div></div><div></div></div>		MISSED APPROACH: Climb to 420 then climbing left turn to 2200 on DCA VOR/DME R-325 to GTN NDB/INT/DCA 5.9 DME and hold.	
	D-ATIS 132.65	POTOMAC APP CON 119.85 239.25 (WEST/SOUTH) 124.2 360.8 (EAST)		WASHINGTON TOWER 119.1 257.6		GND CON 121.7 257.6	CLNC DEL 128.25



ELEV 14		TDZE 14
REIL Rwys 4, 22, 15 and 33 HIRL Rwys 1-19 and 15-33 MIRL Rwy 4-22 TDZ/CL Rwy 1		



CATEGORY	A	B	C	D
S-ILS 1	RA 156/14 150 DA 164			

SA CATEGORY I ILS- SPECIAL AIRCREW  
& AIRCRAFT CERTIFICATION REQUIRED

ILS RWY 1 (SA CAT I)

NE-3, 31 DEC 2020 to 28 JAN 2021

NE-3, 31 DEC 2020 to 28 JAN 2021