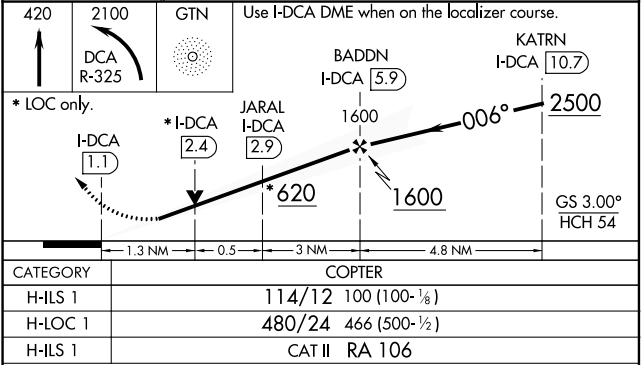
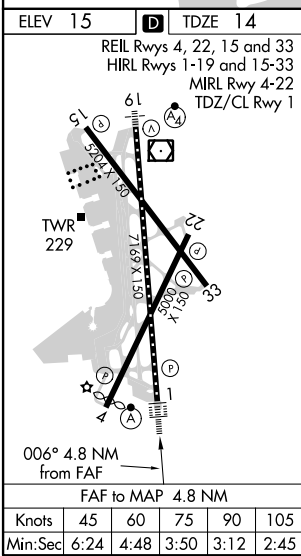
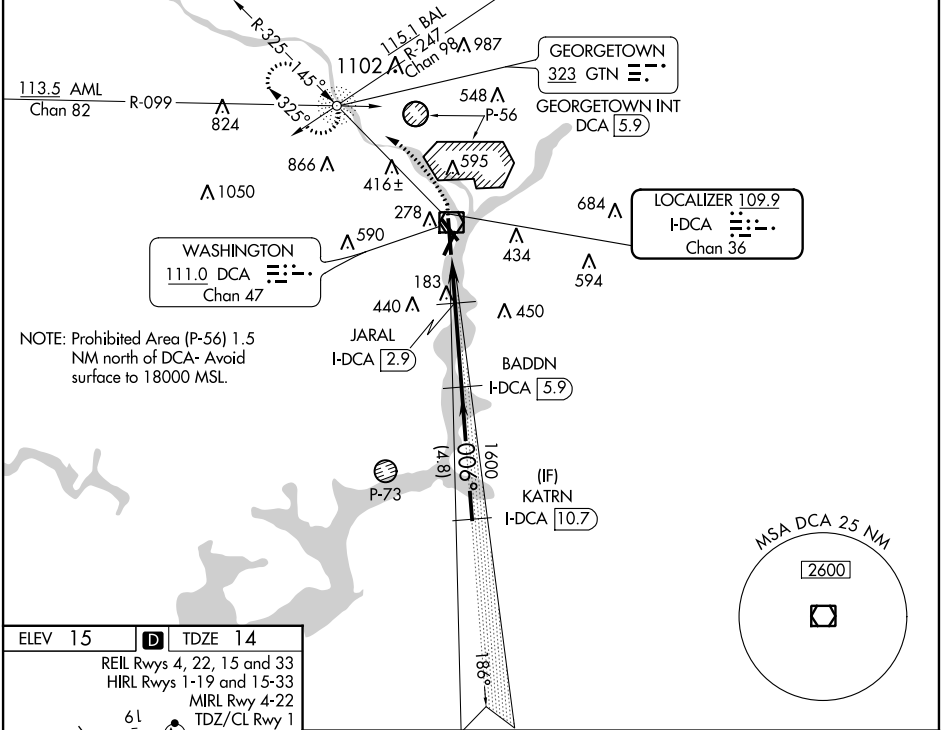


LOC/DME I-DCA	APP CRS	Rwy Idg
109.9	006°	6869
Chan 36		TDZE 14
		Apt Elev 15

COPTER ILS or LOC/DME RWY 1

RONALD REAGAN WASHINGTON NATIONAL (DCA)

<div><div><div><div></div><div></div></div><div>NA</div></div></div>		<div><div><div><div></div><div></div></div><div>ALSF-2</div></div><div>MISSED APPROACH: Climb to 420 then climbing left turn to 2100 on DCA VOR/DME R-325 to GTN NDB/INT/DCA 5.9 DME and hold.</div></div>			
<div>D-ATIS 132.65</div>	<div>POTOMAC APP CON 119.85 239.25 (WEST/SOUTH) 124.2 360.8 (EAST)</div>	<div>WASHINGTON TOWER 119.1 257.6</div>	<div>GND CON 121.7 257.6</div>	<div>CLNC DEL 128.25</div>	<div>CPDLC</div>



COPTER ILS CATEGORY II - SPECIAL AIRCREW & AIRCRAFT CERTIFICATION REQUIRED

NE-3, 31 DEC 2020 to 28 JAN 2021

NE-3, 31 DEC 2020 to 28 JAN 2021