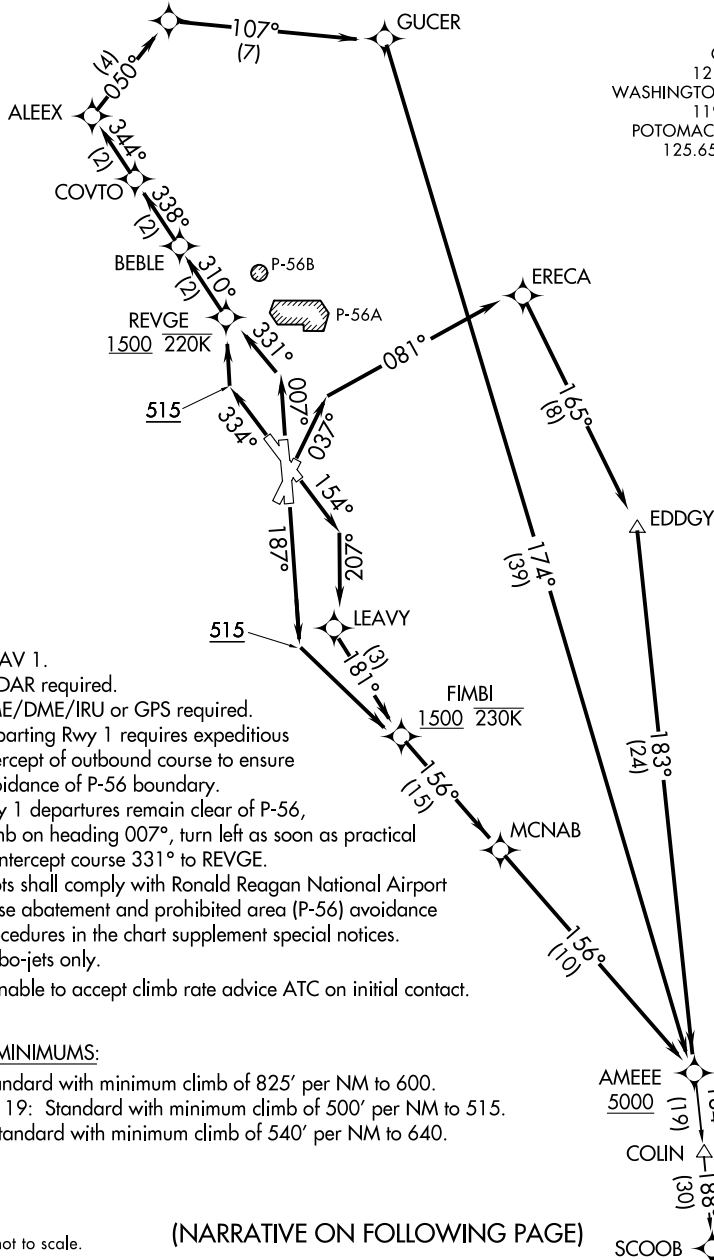


TOP ALTITUDE:
5000

DOGUE
4000 250K

D-ATIS	
132.65	
CLNC DEL	
128.25	
CPDLC	
GND CON	
121.7	257.6
WASHINGTON TOWER	
119.1	257.6
POTOMAC DEP CON	
125.65	348.725



NOTE: RNAV 1.

NOTE: RADAR required.

NOTE: DME/DME/IRU or GPS required.

NOTE: Departing Rwy 1 requires expeditious intercept of outbound course to ensure avoidance of P-56 boundary.

NOTE: Rwy 1 departures remain clear of P-56, climb on heading 007°, turn left as soon as practical to intercept course 331° to REVGE.

NOTE: Pilots shall comply with Ronald Reagan National Airport noise abatement and prohibited area (P-56) avoidance procedures in the chart supplement special notices.

NOTE: Turbo-jets only.

NOTE: If unable to accept climb rate advice ATC on initial contact.

TAKEOFF MINIMUMS:

Rwy 1: Standard with minimum climb of 825' per NM to 600.
Rwy 4, 15, 19: Standard with minimum climb of 500' per NM to 515.
Rwy 33: Standard with minimum climb of 540' per NM to 640.

NOTE: Chart not to scale.

(NARRATIVE ON FOLLOWING PAGE)

AMEEE ONE DEPARTURE (RNAV)

(AMEEE1.AMEEE) 31DEC20

RONALD REAGAN WASHINGTON NATIONAL (DCA)

WASHINGTON, DC

NE-3, 31 DEC 2020 to 28 JAN 2021