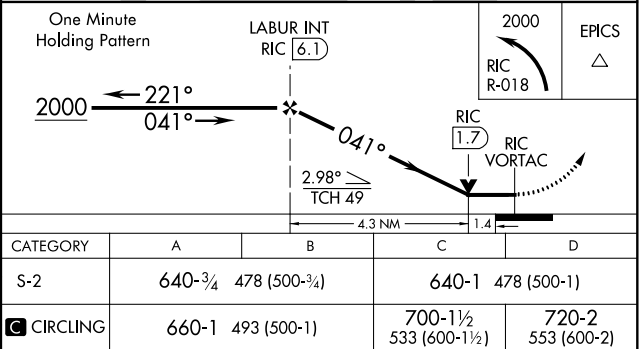
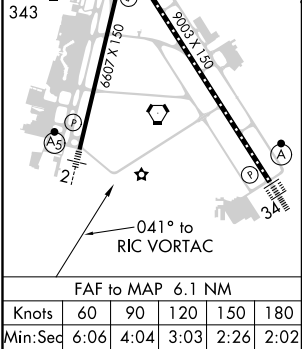
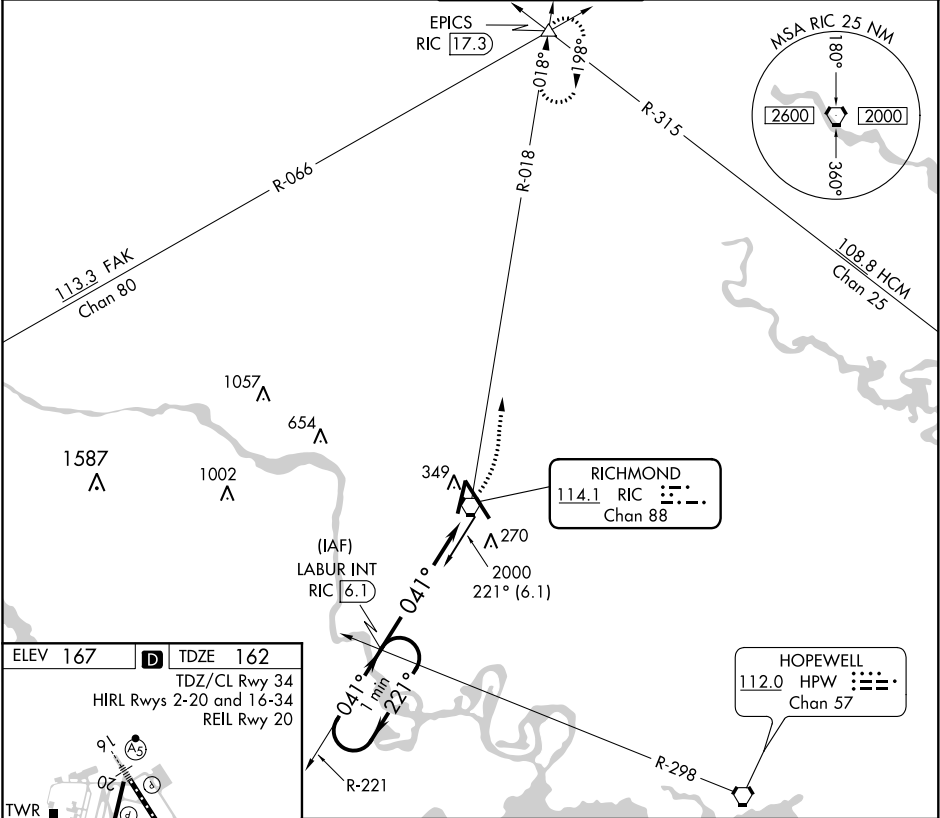


VORTAC RIC	APP CRS	Rwy Idg	6607
114.1	041°	TDZE	162
Chan 88		Apt Elev	167

VOR RWY 2
RICHMOND INTL (RIC)

<p>▼ Rwy 2 helicopter visibility reduction below $\frac{3}{4}$ SM NA. For inop ALS, increase S-2 Cat A/B visibility to 1 SM, and Cat C/D to 1$\frac{1}{2}$ SM.</p>	<p>MALSRL</p>	<p>MISSED APPROACH: Climbing left turn to 2000 on RIC VORTAC R-018 to EPICS INT/RIC 17.3 DME and hold.</p>
---	---------------	--

ATIS	POTOMAC APP CON	RICHMOND TOWER	GND CON	CLNC DEL
119.15 263.025	126.4 282.375 (001°-185°) 126.75 307.2 (186°-360°)	121.1 257.8	121.9 348.6	127.55 348.6



NE-3, 31 DEC 2020 to 28 JAN 2021

NE-3, 31 DEC 2020 to 28 JAN 2021