

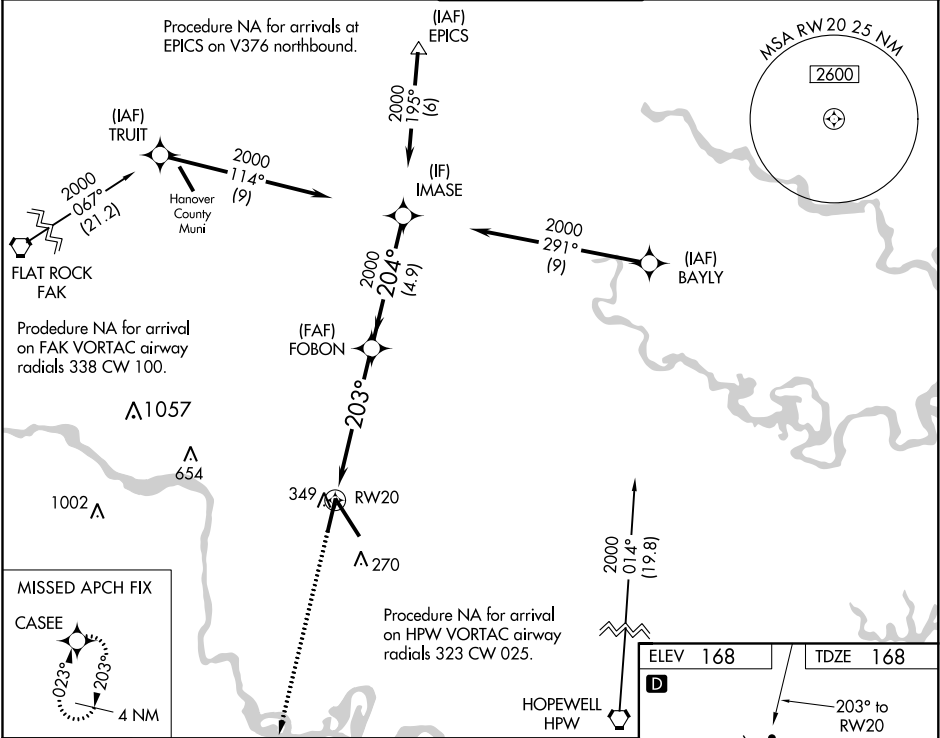
WAAS CH 69320 W20A	APP CRS 203°	Rwy Idg TDZE 168 Apt Elev 168
--	------------------------	---

RNAV (GPS) Z RWY 20

RICHMOND INTL (RIC)

RNP APCH.	MISSED APPROACH: Climb to 2000 direct CASEE and hold.
-----------	---

ATIS 119.15 263.025	POTOMAC APP CON 126.4 282.375 (001°-185°) 126.75 307.2 (186°-360°)	RICHMOND TOWER 121.1 257.8	GND CON 121.9 348.6	CLNC DEL 127.55 348.6
-------------------------------	--	--------------------------------------	-------------------------------	---------------------------------



2000	CASEE	*LNAV only.	FOBOB	IMASE	
↑	✧	*1.5 NM to RW20	2000	204°	2000
RW20		203°	2000		GP 3.00° TCH 49
1.5 NM		4.1 NM	4.9 NM		
CATEGORY	A	B	C	D	
LPV DA	464-7/8		296 (300-7/8)		
LNAV/VNAV DA	603-1 1/2		435 (500-1 1/2)		
LNAV MDA	680-1	512 (600-1)	680-1 3/8	512 (600-1 3/8)	
CIRCLING	680-1	512 (600-1)	700-1 1/2 532 (600-1 1/2)	720-2 552 (600-2)	

