

WAAS CH <b>72716</b> <b>W02A</b>	APP CRS <b>023°</b>	Rwy Idg <b>6607</b> TDZE <b>161</b> Apt Elev <b>168</b>
--	------------------------	---

RNAV (GPS) Z RWY 2  
RICHMOND INTL (RIC)

RNP APCH.

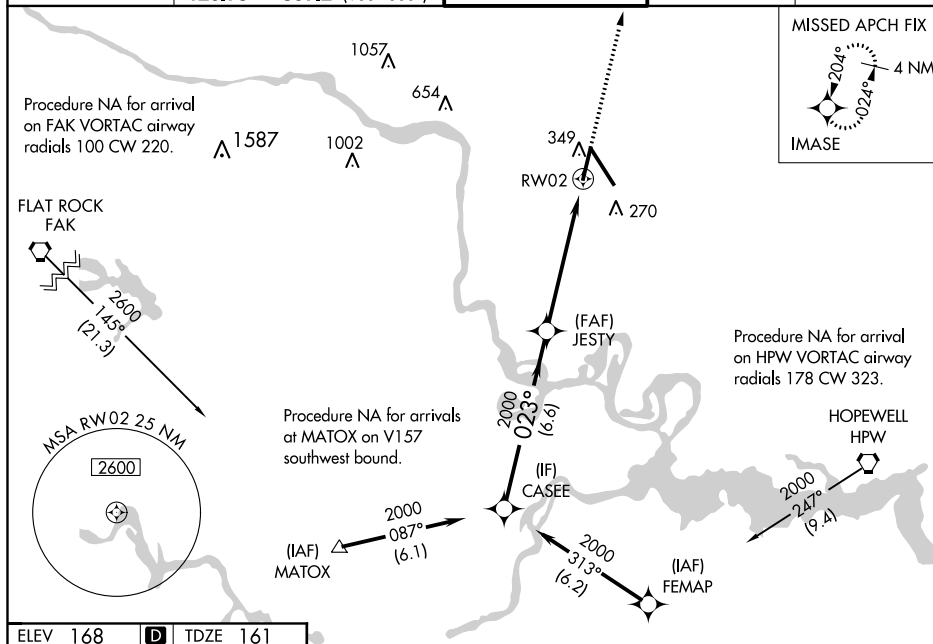
**T** For uncompensated Baro-VNAV systems, LNAV/VNAV NA below -11°C (13°F) or above 54°C (130°F).  
Rwy 2 helicopter visibility reduction below  $\frac{3}{4}$  SM NA.

MALSR

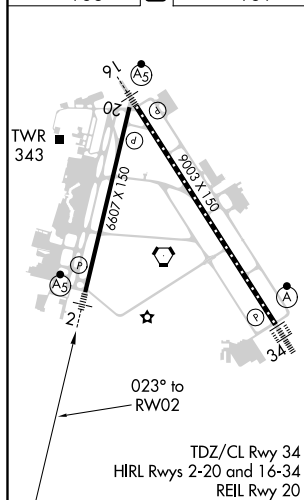


**MISSED APPROACH:** Climb to 2000 direct IMASE and hold.

ATIS		POTOMAC APP CON		RICHMOND TOWER		GND CON		CLNC DEL	
119.15	263.025	126.4	282.375 (001°-185°)	121.1	257.8	121.9	348.6	127.55	348.6
		126.75	307.2 (186°-360°)						



ELEV 168	<b>D</b>	TDZE 161
----------	----------	----------

[illegible]

RNAV (GPS) Z RWY 2