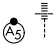
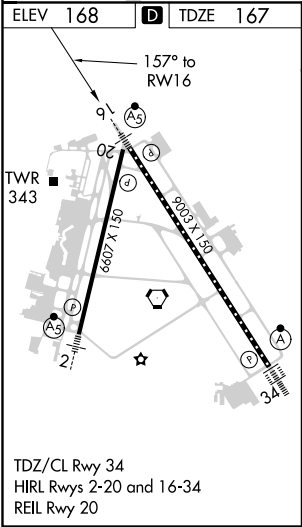
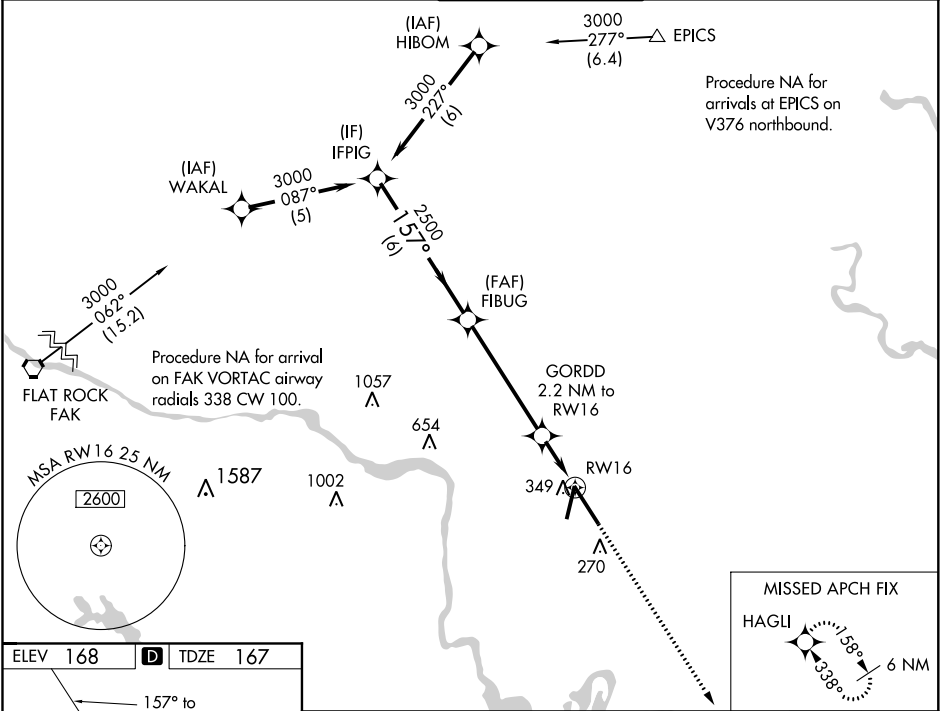


WAAS CH 72720 W16A	APP CRS 157°	Rwy Idg TDZE 167 Apt Elev 168
--	------------------------	---

RNAV (GPS) Z RWY 16
RICHMOND INTL (RIC)

RNP APCH: ▼ For uncompensated Baro-VNAV systems, LNAV/VNAV NA below -11°C (13°F) or above 54°C (130°F). For inop ALS increase LNAV/VNAV all Cts visibility to RVR 5400. ** RVR 1800 authorized with use of FD or AP or HUD to DA.		MALSR 	MISSED APPROACH: Climb to 2500 direct HAGLI and hold.	
ATIS 119.15 263.025	POTOMAC APP CON 126.4 282.375 (001°-185°) 126.75 307.2 (186°-360°)	RICHMOND TOWER 121.1 257.8	GND CON 121.9 348.6	CLNC DEL 127.55 348.6



VGSi and RNAV glidepath not coincident (VGSi Angle 3.00/TCH 71).				2500	HAGLI
GP 3.00° TCH 54				2500	*LNAV only.
IFPIG 3000 157° FIBUG 2500 GORDD 2.2 NM to RW16				2500	
6 NM 5 NM 1 NM 1.2 NM				2500	
CATEGORY	A	B	C	D	
LPV DA **	367/24 200 (200-½)				
LNAV/VNAV DA	504/31 337 (400-⅝)				
LNAV MDA	600/24 433 (500-½)		600/40 433 (500-¾)		
CIRCLING	660-1 492 (500-1)		700-1½ 532 (600-1½)		720-2 552 (600-2)