

LOC I-BNE <b>110.7</b>	APP CRS <b>337°</b>	Rwy Idg TDZE <b>161</b> Apt Elev <b>167</b>
---------------------------	------------------------	---

ILS RWY 34 (SA CAT I)

RICHMOND INTL (RIC)

Requires specific OPSPEC, MSPEC, or LOA approval and use of HUD to DH.

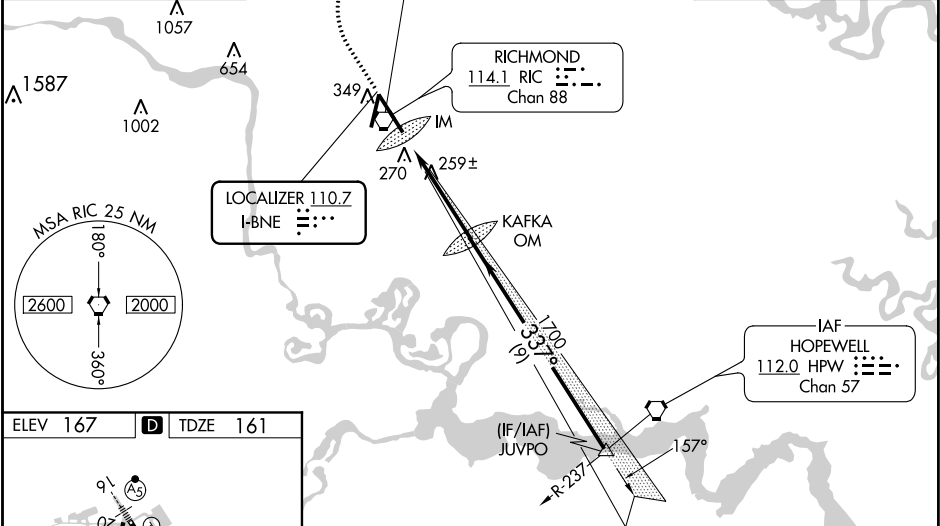
ALSIF-2

MISSED APPROACH: Climb to 800 then climbing right turn to 2000 via RIC VORTAC R-018 to EPICS INT/ RIC 17.3 DME and hold.

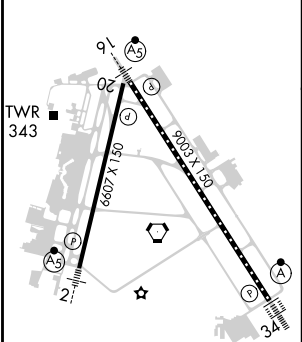
ATIS <b>119.15 263.025</b>	POTOMAC APP CON <b>126.4 282.375</b> (001°-185°) <b>126.75 307.2</b> (186°-360°)	RICHMOND TOWER <b>121.1 257.8</b>	GND CON <b>121.9 348.6</b>	CLNC DEL <b>127.55 348.6</b>
-------------------------------	--	--------------------------------------	-------------------------------	---------------------------------

MISSED APCH FIX

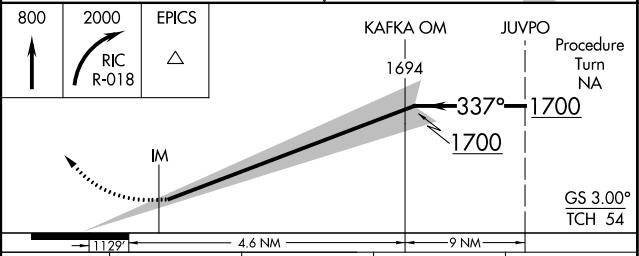
ALTERNATE MISSED APCH FIX



ELEV <b>167</b>	<b>D</b>	TDZE <b>161</b>
-----------------	----------	-----------------



TDZ/CL Rwy 34  
HIRL Rwy 2-20 and 16-34  
REIL Rwy 20



CATEGORY	A	B	C	D
S-ILS 34	RA 156/14	150	DA 311	

SA CATEGORY I ILS-SPECIAL AIRCREW  
& AIRCRAFT CERTIFICATION REQUIRED