

PATUXENT RIVER, MARYLAND

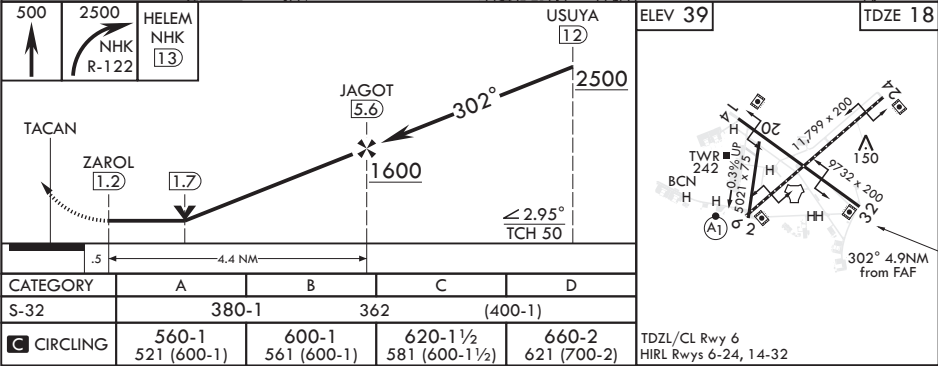
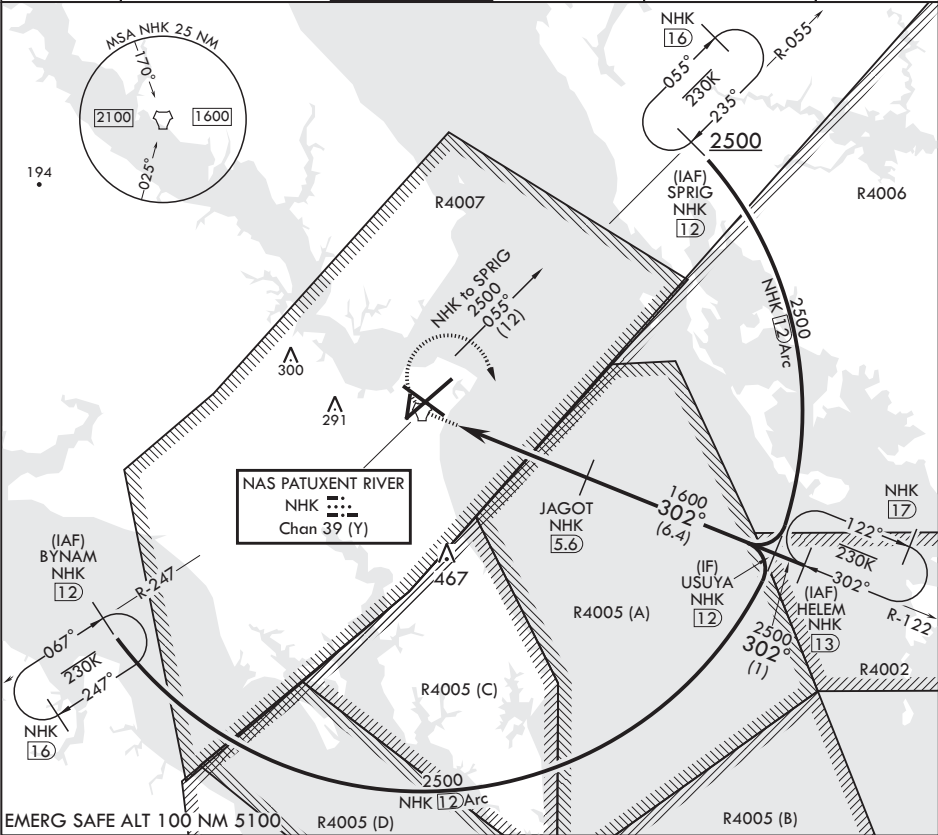
TACAN RWY 32

TACAN NHK Chan 39 (Y)	APCH CRS 302°	Rwy ldg TDZE Arpt Elev	9732 18 39
--------------------------	------------------	------------------------------	------------------

AL-314 (USN) PATUXENT RIVER NAS (TRAPNELL FLD) (KNHK)

	MISSED APPROACH: Climb to 500, then climbing right turn to 2500 on NHK TACAN R-122 to HELEM and hold.
---	---

ATIS 322.425	APP CON/DEP CON 121.0 250.3	TOWER 123.7 343.65	GND CON 120.6 336.4	CLNC DEL 135.2 316.125	ASR/PAR
-----------------	--------------------------------	-----------------------	------------------------	---------------------------	---------



PATUXENT RIVER, MARYLAND

38°17'N - 76°25'W PATUXENT RIVER NAS (TRAPNELL FLD) (KNHK)

Orig 25MAY17

TACAN RWY 32

NE-3, 31 DEC 2020 to 28 JAN 2021

NE-3, 31 DEC 2020 to 28 JAN 2021