

PATUXENT RIVER, MARYLAND

RNAV (GPS) RWY 6

APCH CRS	Rwy Idg	11,799
059°	TDZE	39
	Arpt Elev	39

AL-314 (USN) PATUXENT RIVER NAS (TRAPNELL FLD) (KNHK)

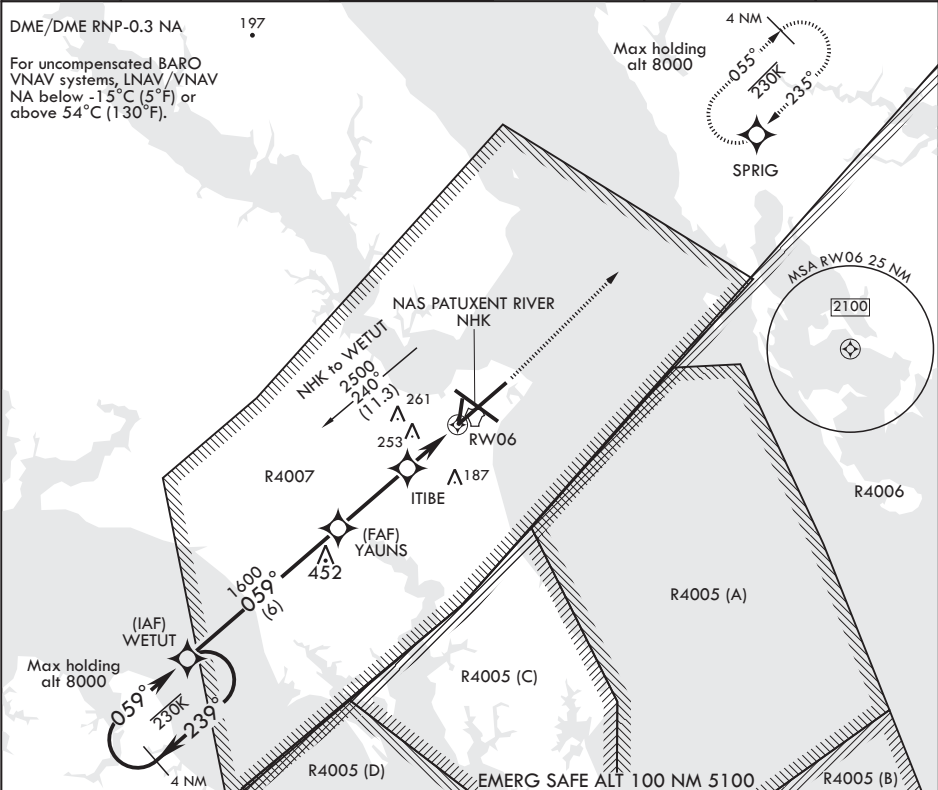
⚠ * When ALS inop, increase CAT ABCD vis to 1 5/8 miles.
** When ALS inop, increase CAT AB vis to 1 mile, CAT CD vis to 1 3/8 miles.

ALSF-1

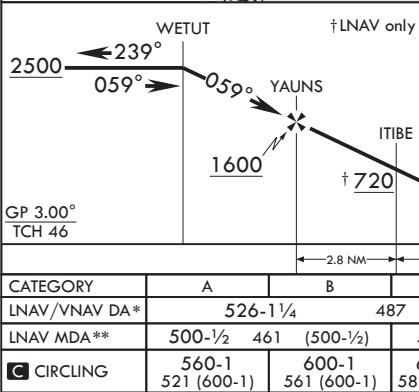


MISSED APPROACH: Climb to 800 then climbing left turn to 2500 direct SPRIG and hold.

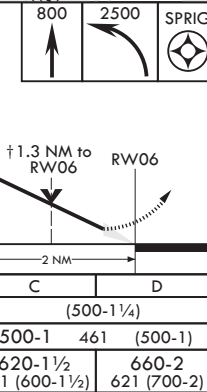
ATIS	APP CON/DEP CON	TOWER	GND CON	CLNC DEL	ASR/PAR
322.425	121.0 250.3	123.7 343.65	120.6 336.4	135.2 316.125	



GP 3.00°
TCH 46

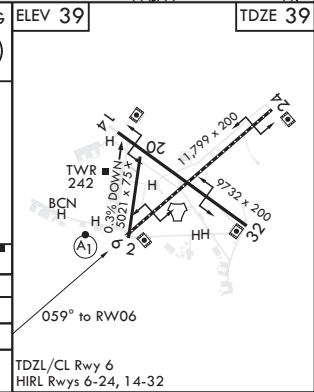


↑ LNAV only



ELEV 39

TDZE 39



CATEGORY	A	B	C	D
LNAV/VNAV DA*	526-1 1/4	487	(500-1 1/4)	
LNAV MDA**	500-1/2 461	(500-1/2)	500-1 461	(500-1)
CIRCLING	560-1 521 (600-1)	600-1 561 (600-1)	620-1 1/2 581 (600-1 1/2)	660-2 621 (700-2)

TDZL/CL Rwy 6
HIRL Rlys 6-24, 14-32

PATUXENT RIVER, MARYLAND

38°17'N - 76°25'W PATUXENT RIVER NAS (TRAPNELL FLD) (KNHK)

Amdt 1 09NOV17

RNAV (GPS) RWY 6

NE-3, 31 DEC 2020 to 28 JAN 2021

NE-3, 31 DEC 2020 to 28 JAN 2021