

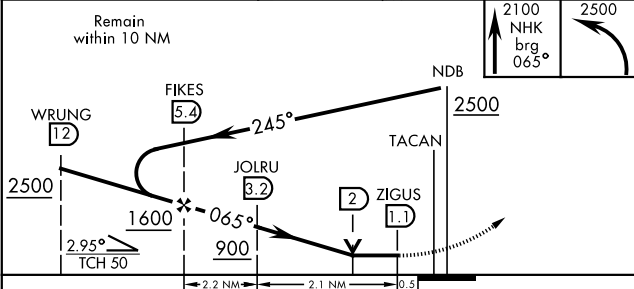
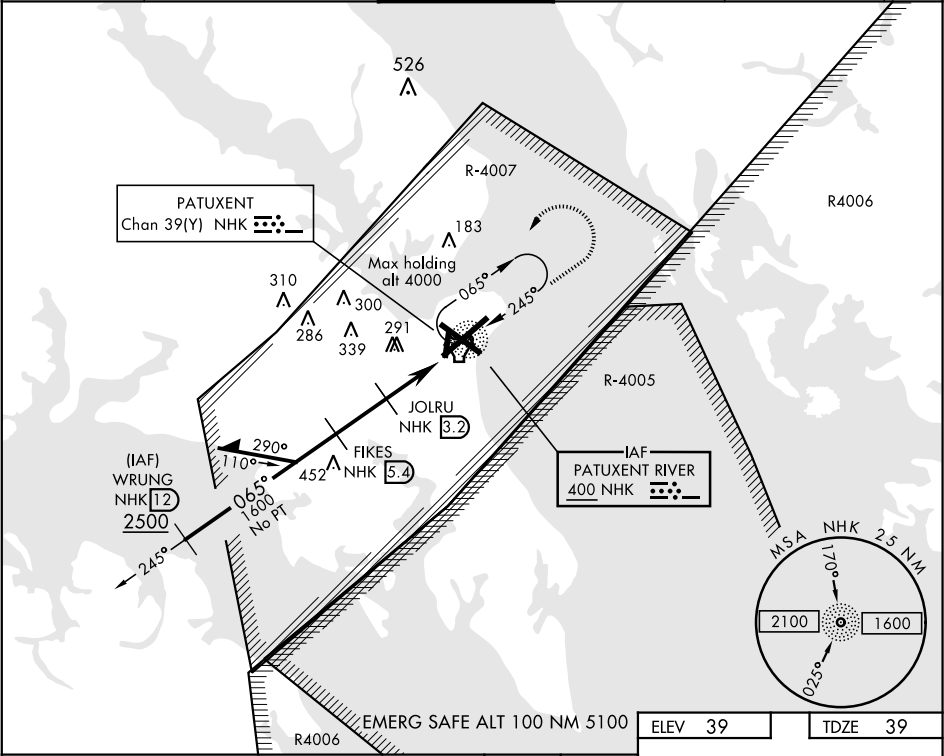
NDB/DME RWY 6

NDB NHK <b>400</b>	APCH CRS <b>065°</b>	Rwy ldg <b>11,799</b> TDZE <b>39</b> Arprt Elev <b>39</b>
-----------------------	-------------------------	---

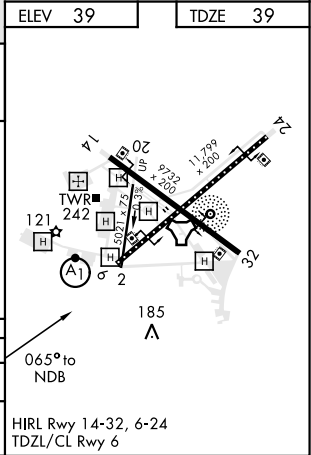
AL-314 [USN] PATUXENT RIVER NAS (TRAPNELL FIELD) (KNHK)

DME or RADAR required.	ALSIF-1 	MISSED APPROACH: Climb to 2100 on 065° bearing from NHK NDB, then climbing left turn to 2500 direct NHK NDB and hold.
* When ALS inop, increase CAT AB vis to 1 mile, CAT CD vis to 1½ miles.		

ATIS <b>322.425</b>	PATUXENT APP/DEP CON <b>121.0 250.3</b>	PATUXENT TOWER <b>123.7 343.65</b>	GND CON <b>120.6 336.4</b>	CLNC DEL <b>135.2 316.125</b>	ASR/ PAR
------------------------	--	---------------------------------------	-------------------------------	----------------------------------	-------------



CATEGORY	A	B	C	D
S-6 *	560-¾ 521 (600-¾)	560-1 521 (600-1)	560-1 521 (600-1)	560-1 521 (600-1)
CIRCLING	560-1 521 (600-1)	600-1 561 (600-1)	620-1½ 581 (600-1½)	660-2 621 (700-2)



NDB/DME RWY 6

NE-3, 31 DEC 2020 to 28 JAN 2021

NE-3, 31 DEC 2020 to 28 JAN 2021