

PATUXENT RIVER, MARYLAND

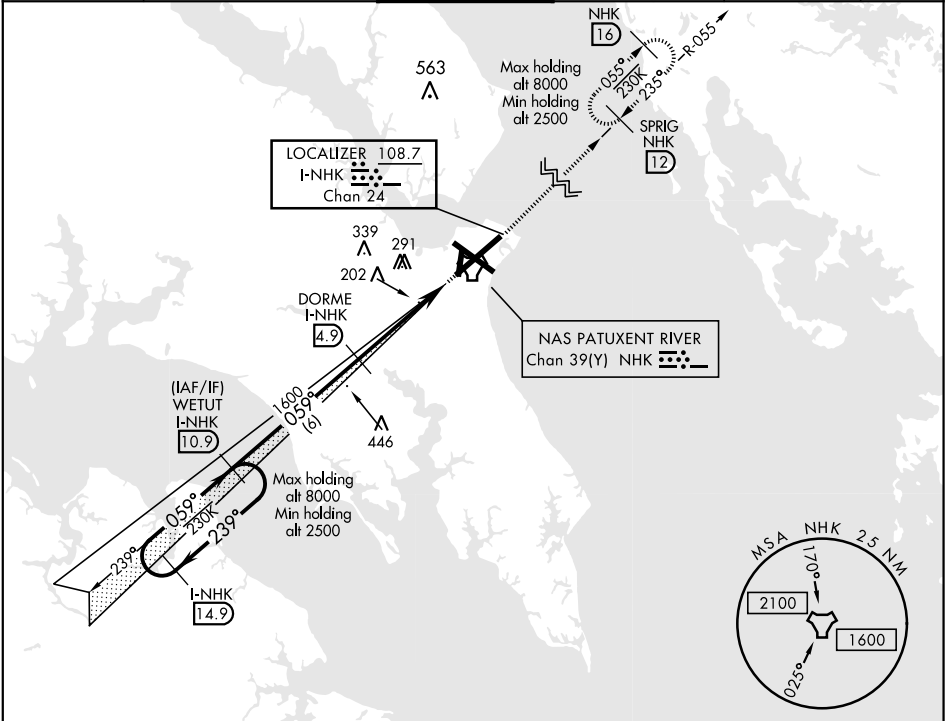
ILS RWY 6

LOC/DME I-NHK <b>108.7</b> Chan <b>24</b>	APCH CRS <b>059°</b>	Rwy ldg <b>11,799</b> TDZE <b>39</b> Arprt Elev <b>39</b>
---	-------------------------	--

AL-314 [USN] PATUXENT RIVER NAS (TRAPNELL FIELD) (KNHK)

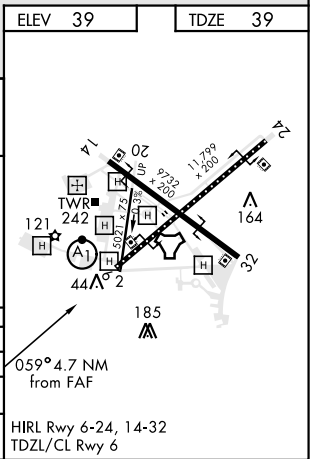
<b>▽</b> * When ALS inop, increase vis to ¾ mile. ** When ALS inop, increase CAT AB vis to 1 mile; CAT CD vis to 1¾ miles.	ALS-F-1 	MISSED APPROACH: Climb to 2500 to join NHK TACAN R-055 direct SPRIG and hold.
--	-------------	--

ATIS <b>322.425</b>	PATUXENT APP/DEP CON <b>121.0 250.3</b>	PATUXENT TOWER <b>123.7 343.65</b>	GND CON <b>120.6 336.4</b>	CLNC DEL <b>135.2 316.125</b>	ASR/PAR
------------------------	--	---------------------------------------	-------------------------------	----------------------------------	---------



EMERG SAFE ALT 100 NM 5100

	WETUT I-NHK <b>10.9</b>	DORME I-NHK <b>4.9</b>	↑ LOC only	2500 NHK R-055	SPRIG NHK <b>12</b>
	2500 ← 239° 059° → 2500	059°	1600		
GS 3.00° TCH 51					
		4.2 NM	0.5		
CATEGORY	A	B	C	D	
S-ILS 6 *	239-½		200	(200-½)	
S-LOC 6 **	500-½	461 (500-½)	500-1	461 (500-1)	
◼ CIRCLING	560-1 521 (600-1)	600-1 561 (600-1)	620-1½ 581 (600-1½)	680-2 641 (700-2)	



PATUXENT RIVER, MARYLAND

38° 17' N-76° 25' W

PATUXENT RIVER NAS (TRAPNELL FIELD) (KNHK)

Orig 21MAY20

ILS RWY 6

NE-3, 31 DEC 2020 to 28 JAN 2021

NE-3, 31 DEC 2020 to 28 JAN 2021