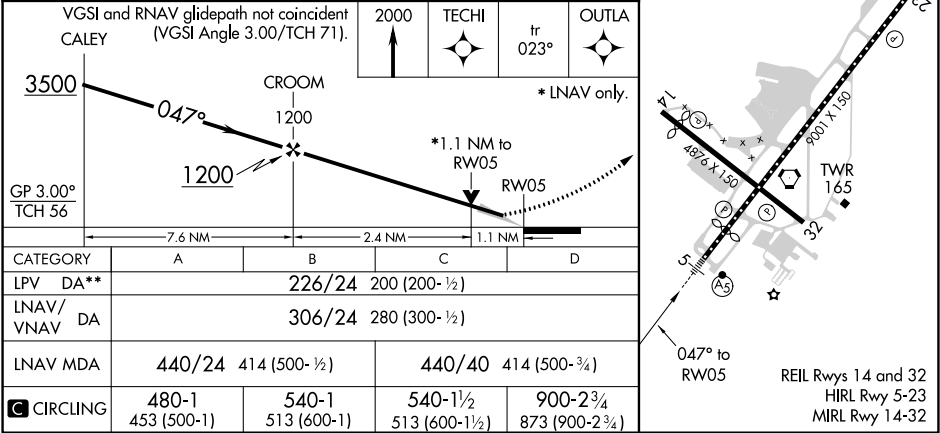
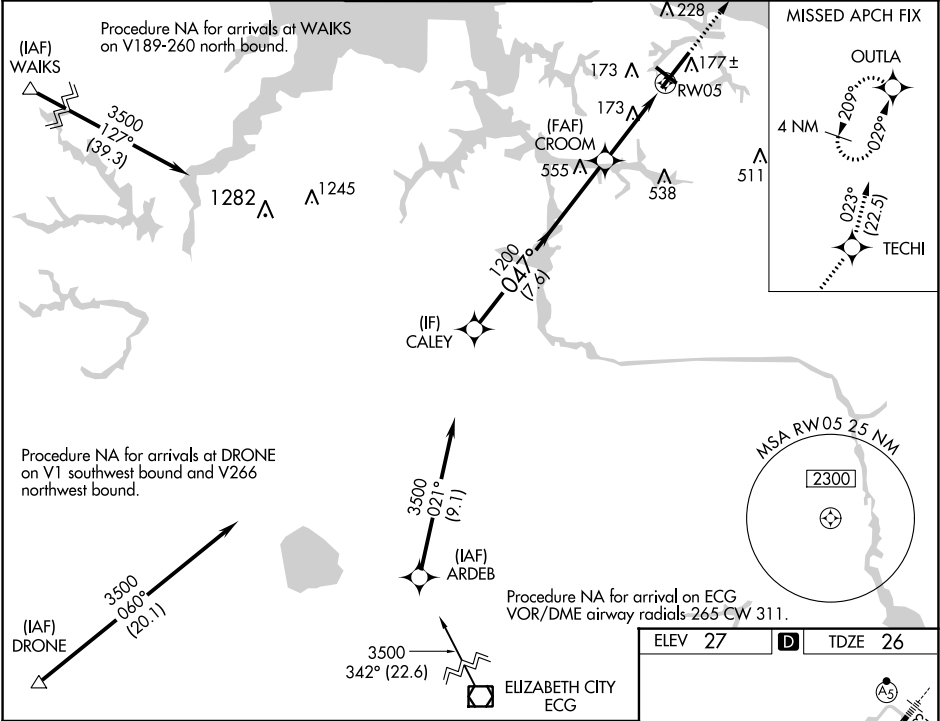


WAAS CH <b>50222</b> <b>W05A</b>	APP CRS <b>047°</b>	Rwy Idg TDZE <b>26</b> Apt Elev <b>27</b>
--	------------------------	---

RNAV (GPS) Z RWY 5  
NORFOLK INTL (ORF)

RNP APCH. ▼ For uncompensated Baro-VNAV systems, LNAV/VNAV NA below -9°C or above 54°C. ▲ For inop ALS, increase LNAV/VNAV all Cats visibility to RVR 4500 and LNAV Cats C and D visibility to RVR 6000. **RVR 1800 authorized with use of FD or AP or HUD to DA.	MALSR 	MISSED APPROACH: Climb to 2000 direct TECHI then on track 023° to OUTLA and hold.
---	-----------	--

ATIS <b>127.15</b>	NORFOLK APP CON <b>118.9 353.7</b>	NORFOLK TOWER <b>120.8 257.8</b>	GND CON <b>121.9</b>	CLNC DEL <b>118.5</b>
-----------------------	---------------------------------------	-------------------------------------	-------------------------	--------------------------



NE-3, 31 DEC 2020 to 28 JAN 2021

NE-3, 31 DEC 2020 to 28 JAN 2021