
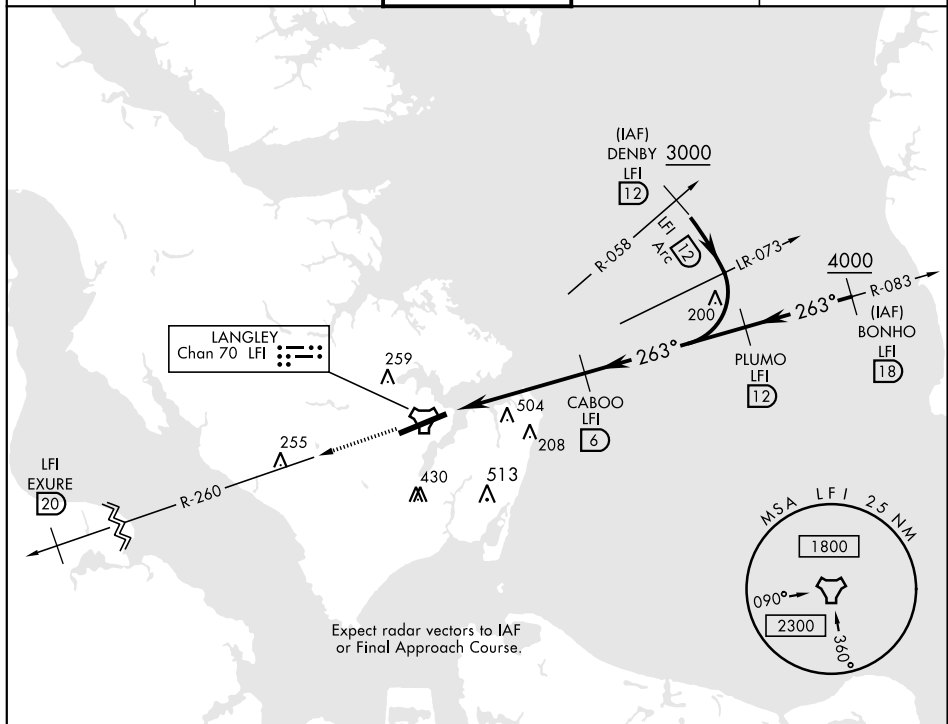


TACAN Y RWY 26

TACAN LFI Chan <b>70</b>	APCH CRS <b>263°</b>	Rwy Idg <b>10,002</b> TDZE Arpt Elev <b>8</b>	AL-185 [USAF]	LANGLEY AFB (KLF)	
<b>▼</b> *When ALS inop, increase CAT AB RVR to 55 and vis to 1 mile, CAT CDE vis to 1¼ miles. ** Circling S of Rwy 8-26 not authorized.			ALSF-1 	MISSED APPROACH: Climb to 3000 via LFI R-260 to 20 DME (EXURE), then as instructed by ATC.	
ATIS ★ <b>270.1</b>	NORFOLK APP CON <b>125.7 335.625</b>	LANGLEY TOWER ★ <b>125.0 253.5</b>	GND CON <b>121.7 275.8</b>	CLNC DEL <b>118.85 257.625</b>	



NE-3, 31 DEC 2020 to 28 JAN 2021

EMERG SAFE ALT 100 NM 4100

