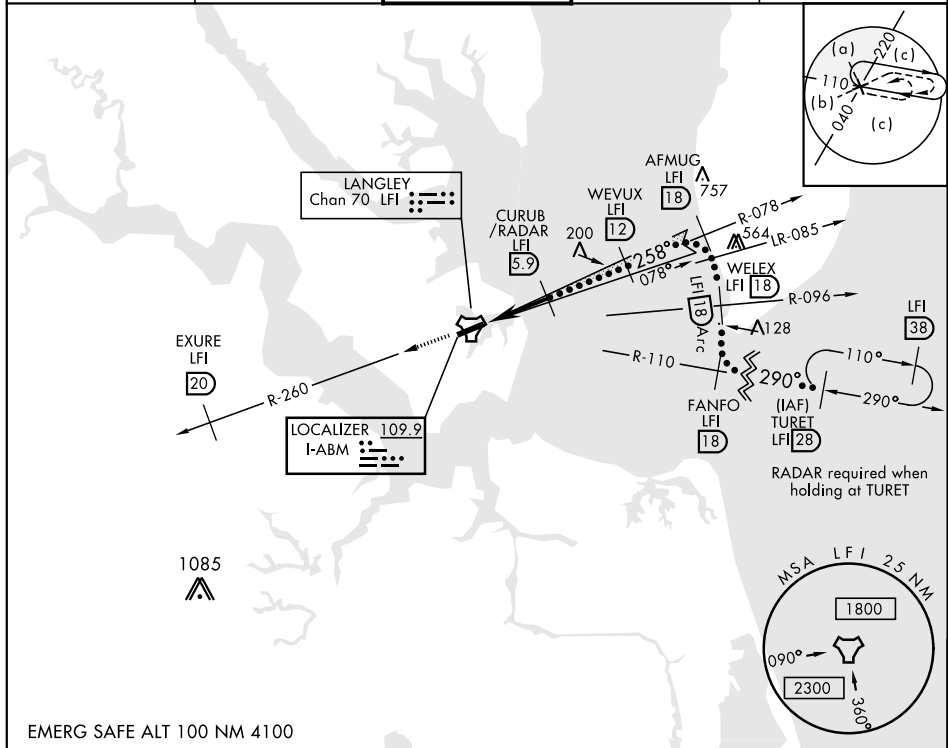


HI-ILS or LOC Z RWY 26

LOC I-ABM 109.9	APCH CRS 258°	Rwy ldg 10,002 TDZE Arprt Elev 8	JAL-185 [USAF]	LANGLEY AFB (KLFI)
---------------------------	-------------------------	--	----------------	--------------------

RADAR or DME Required. *When ALS inop, increase RVR to 40, vis to ¾ mile. **When ALS inop, increase RVR to 55, vis to 1 miles. ***Circling S of Rwy 8-24 not authorized.	ALSF-1 (A1)	MISSED APPROACH: Climb to 3000 via LFI R-260 to 20 DME (EXURE), then as instructed by ATC.
---	----------------	--

ATIS ★ 270.1	NORFOLK APP CON 125.7 335.625	LANGLEY TOWER ★ 125.0 253.5	GND CON 121.7 275.8	CLNC DEL 118.85 257.625
------------------------	---	---------------------------------------	-------------------------------	-----------------------------------



3000 LFI R-260	EXURE LFI 20	† LOC only	ELEV 8	TDZE 8
CATEGORY	C	D	E	HIRL Rwy 8-26
S-ILS 26*	208/24	200	(200-½)	FAF to MAP 4.7 NM
S-LOC 26**	380/35	372	(400-¾)	Knots 120 140 160 180 200
***CIRCLING	660-1¾ 652 (700-1¾)	760-2½ 752 (800-2½)	760-2¾ 752 (800-2¾)	Min:Sec 2:21 2:01 1:46 1:34 1:25

HI-ILS or LOC Z RWY 26