

LOC/DME I-RME	APP CRS	Rwy Idg
110.1	327°	11821
Chan 38		TDZE 498
		Apt Elev 504

ILS or LOC RWY 33

GRIFFISS INTL (RME)

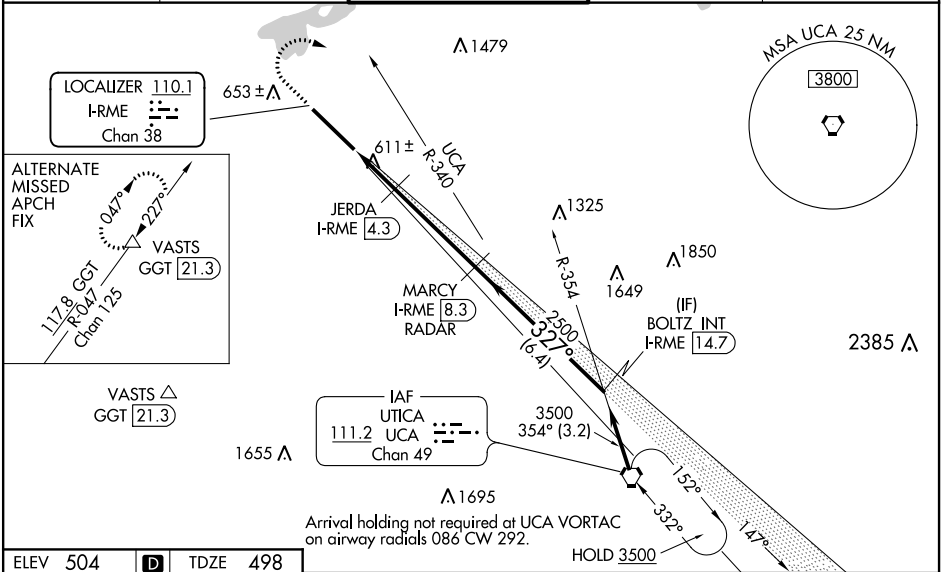
DME or RADAR required for LOC only.

▼ Rwy 33 helicopter visibility reduction below ¾ SM NA. When local altimeter setting not received, use Syracuse altimeter setting: increase S-ILS 33 DA to 873; increase all MDAs 100 feet and S-LOC 33 Cat C/D visibility ¼ SM, Circling Cat B/C ¼ SM and JERDA fix minimums S-LOC 33 Cat C/D ¼ SM, Circling Cat B/C ¼ SM. For inop ALS, increase S-ILS 33 all Cats visibility to ¾ SM, S-LOC 33 Cat A/B to 1 SM, and Cat C/D to 1 ¼ SM and JERDA fix minimums S-LOC 33 Cat A/B to 1 SM. For inop ALS when using Syracuse altimeter setting, increase S-LOC 33 Cat A/B visibility to 1 SM, and Cat C/D to 2 SM and JERDA fix minimums S-LOC 33 Cat A/B to 1 SM. Circling NA southwest of Rwy 15-33.

MALSR

MISSED APPROACH:
Climb to 1600 then climbing right turn to 3500 on UCA VORTAC R-340 to UCA VORTAC and hold.

ATIS	SYRACUSE APP CON	GRIFFISS TOWER ★	GND CON	UNICOM
118.7	127.425 290.45	118.1 (CTAF) 0 291.7	121.9	122.95



ELEV 504

D

TDZE 498

1600

3500

UCA

*1200 when using Syracuse altimeter setting.

*LOC only.

GS 3.00° TCH 56

CATEGORY	A	B	C	D
S-ILS 33	788-¾ 290 (300-¾)			
S-LOC 33	1100-¾ 602 (600-¾)	1100-1¾ 602 (600-1¾)		
CIRCLING	1140-1 636 (700-1)	1260-1 756 (800-1)	1400-2¾ 896 (900-2¾)	1640-3 1136 (1200-3)
	JERDA FIX MINIMUMS (DME REQUIRED)			
S-LOC 33	1040-¾ 542 (600-¾)	1040-1½ 542 (600-1½)		
CIRCLING	1140-1 636 (700-1)	1260-1 756 (800-1)	1400-2¾ 896 (900-2¾)	1640-3 1136 (1200-3)