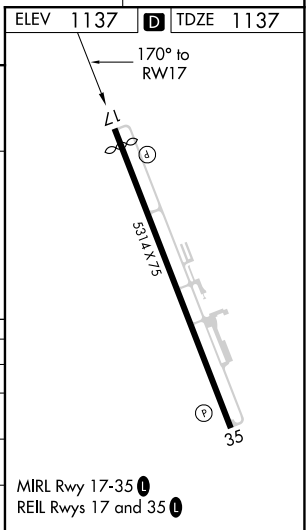
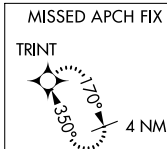


RNAV (GPS) RWY 17
HAMILTON MUNI (VGC)

MISSED APPROACH:
Climb to 3600 direct
TRINT and hold.

122.7 L

MIRL Rwy 17-35 **L**
REIL Rwy 17 and 35 **L**

NE-2, 31 DEC 2020 to 28 JAN 2021