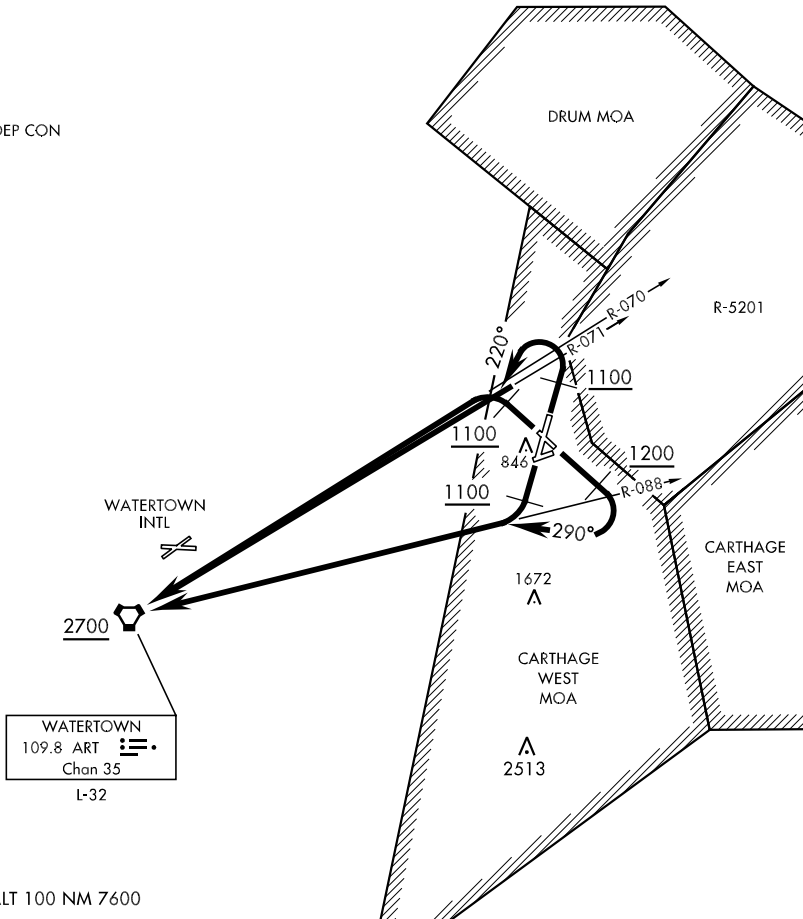


ATIS 119.525  
CLNC DEL  
121.9  
GND CON  
121.9 229.8  
WHEELER-SACK  
TOWER  
118.75 290.25  
WHEELER-SACK DEP CON  
124.875 257.6

SL-5754 [USA]



DEPARTURE ROUTE DESCRIPTION

- TAKE-OFF RWY 15: Climb via heading 147° to 1200, then climbing right turn to 2700 via heading 290° and ART R-088 to ART VORTAC, thence...
- TAKE-OFF RWY 21: Climb via heading 209° to 1100, then climbing right turn to 2700 via ART R-088 to ART VORTAC, thence...
- TAKE-OFF RWY 03: Climb via heading 029° to 1100, then climbing left turn to 2700 via heading 220° and ART R-071 to ART VORTAC, thence...
- TAKE-OFF RWY 33: Climb via heading 327° to 1100, then climbing left turn to 2700 via ART R-070 to ART VORTAC, thence...
- ... Cross ART VORTAC at or above 2700 via assigned route.