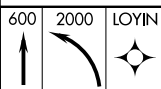
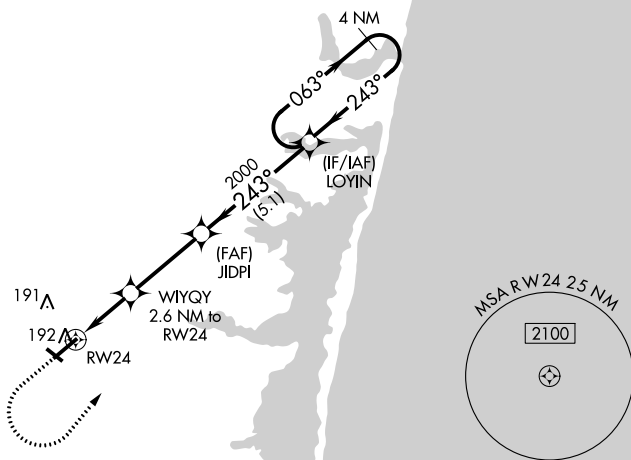


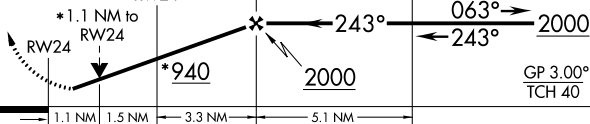
RNAV (GPS) RWY 24  
OCEAN COUNTY (MJX)


**MISSED APPROACH:** Climb to 600 then climbing left turn to 2000 direct to LOYIN and hold.

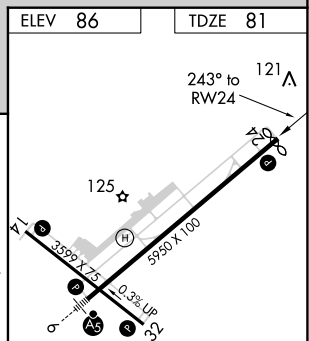
AWOS-3PT <b>119.875</b>	MC GUIRE APP CON <b>126.475 363.8</b>	GCO <b>121.725</b>	UNICOM <b>122.7 (CTAF) 0</b>
----------------------------	--	-----------------------	---------------------------------



WIYQY  
2.6 NM to



CATEGORY		A	B	C	D
LPV	DA	331-3 $\frac{3}{4}$		250 (300-3 $\frac{3}{4}$ )	
LNAV/ VNAV	DA	358-7 $\frac{7}{8}$		277 (300-7 $\frac{7}{8}$ )	
LNAV	MDA	460-1		379 (400-1)	
 CIRCLING		540-1 454 (500-1)	560-1 474 (500-1)	580-1 $\frac{1}{2}$ 494 (500-1 $\frac{1}{2}$ )	700-2 614 (700-2)



MIRL Rwy 14-32 **L**  
HIRL Rwy 6-24 **L**  
REIL Rwy 14, 24 and 32 **L**