

LOC I-GVQ <b>108.9</b>	APP CRS <b>282°</b>	Rwy Idg TDZE Apt Elev	<b>5499</b> <b>911</b> <b>913</b>
---------------------------	------------------------	-----------------------------	---

ILS or LOC RWY 28

GENESEE COUNTY (GVQ)

⚠

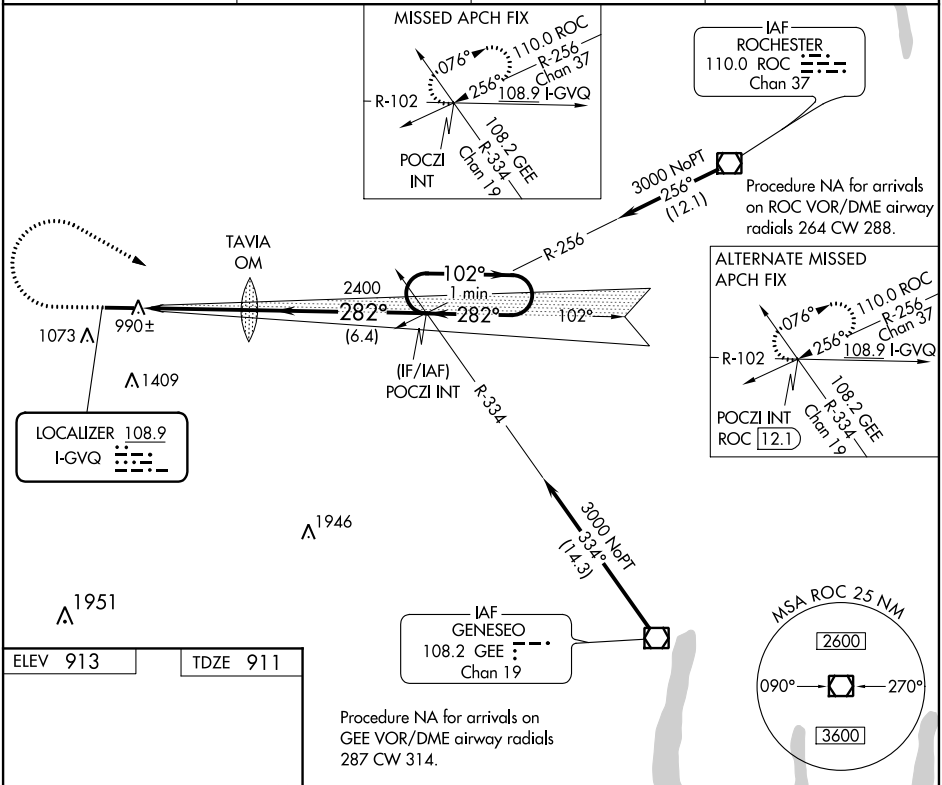
NA

When local altimeter setting not received, use Rochester altimeter setting and increase all DA 102 feet and all MDA 120 feet; increase S-LOC 28 Cats C/D and Circling Cat D visibility ¼ mile. Autopilot coupled approach NA below 1433.

MALSR

MISSED APPROACH: Climb to 1500 then climbing right turn to 3000 via heading 130° and I-GVQ east course to POCZI INT and hold.

AWOS-3PT <b>127.525</b>	ROCHESTER APP CON <b>123.7 322.3</b>	CLNC DEL <b>121.8</b>	UNICOM <b>122.7</b> (CTAF) <b>0</b>
----------------------------	---	--------------------------	--



ELEV 913

TDZE 911

282° 4.2 NM from FAF

5499 X 100

28

REIL Rwy 10

HIRL Rwy 10-28

FAF to MAP 4.2 NM

Knots 60 90 120 150 180

Min:Sec 4:12 2:48 2:06 1:41 1:24

1500	3000	I-GVQ E crs	POCZI INT	VGSI and ILS glidepath not coincident (VGSI Angle 3.00°/TCH 62).	One Minute Holding Pattern
1500	3000	hdg 130°	TAVIA OM	POCZI INT	102° 3000
1500	3000	2307	2400	282°	GS 3.00° TCH 56
1500	3000	4.2 NM	6.4 NM		
CATEGORY	A	B	C	D	
S-ILS 28	1111-½	200 (200-½)			
S-LOC 28	1260-½	349 (400-½)			1260-¾ 349 (400-¾)
CIRCLING	1380-1	467 (500-1)	1380-1½ 467 (500-1½)	1480-2 567 (600-2)	