

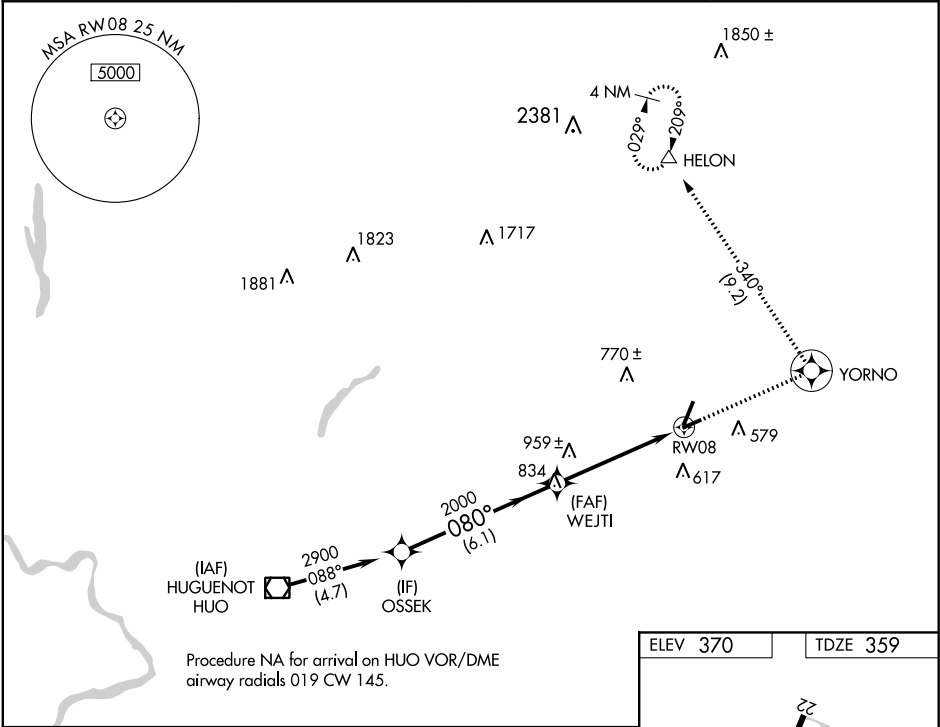
WAAS CH <b>50216</b> <b>W08A</b>	APP CRS <b>080°</b>	Rwy Idg TDZE Apt Elev	<b>3664</b> <b>359</b> <b>370</b>
--	------------------------	-----------------------------	---

RNAV (GPS) RWY 8

ORANGE COUNTY (MGJ)

RNP APCH.	MISSED APPROACH: Climb to 5300 direct YORNO and left turn on track 340° to HELON and hold, continue climb-in-hold to 5300.
<div><div>▼</div><div>▲</div></div> Rwy 8 helicopter visibility reduction below 1 SM NA. Straight-in Rwy 8 NA at night, Circling Rwy 8, 22, 26 NA at night.	

ASOS <b>119.275</b>	NEW YORK APP CON <b>132.75 363.1</b>	CLNC DEL <b>123.85</b>	UNICOM <b>122.725 (CTAF) 0</b>
------------------------	---	---------------------------	-----------------------------------



VGSI and RNAV glidepath not coincident (VGSI Angle 3.50/TCH 49).				5300	YORNO	HELON
OSSEK				↑	☉	△
2900				tr 340°		
GP 3.00° TCH 40				RW08		
OSSEK				WEJTI		
2000				5 NM		
6.1 NM						
CATEGORY	A	B	C	D		
LPV DA	1059-2½ 700 (700-2½)					
LNNAV MDA	1220-1 861 (900-1)	1220-1¼ 861 (900-1¼)	1220-2½ 861 (900-2½)	1220-2¾ 861 (900-2¾)		
CIRCLING	1220-1¼	850 (900-1¼)	1220-2½ 850 (900-2½)	1220-2¾ 850 (900-2¾)		

