

WAAS CH <b>40041</b> <b>W27A</b>	APP CRS <b>269°</b>	Rwy Idg TDZE Apt Elev	<b>6035</b> <b>302</b> <b>302</b>
--	------------------------	-----------------------------	---

RNAV (GPS) RWY 27

OGDENSBURG INTL (OGS)

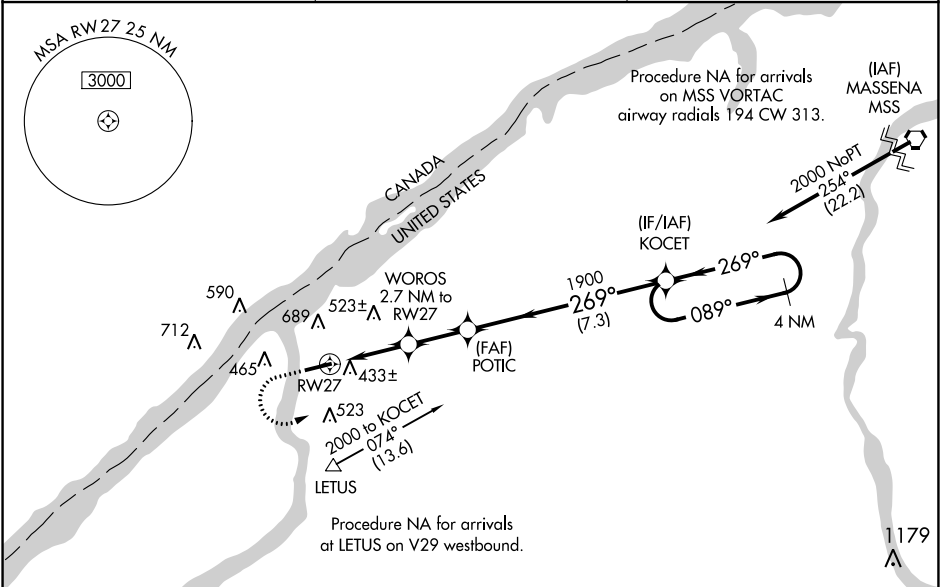
▼

⚠ NA

Baro-VNAV and VDP NA when using Massena altimeter setting. DME/DME RNP-0.3 NA. When local altimeter setting not received, use Massena altimeter setting and increase LPV DA to 636, LNAV/VNAV DA to 842 and all visibilities ¾ SM; increase all MDA 100 feet and LNAV and Circling Cat C and D visibilities ¼ SM. For uncompensated Baro-VNAV systems, LNAV/VNAV NA below -15°C (5°F) or above 54°C (130°F).

MISSED APPROACH: Climb to 800 then climbing left turn to 2000 direct KOCET and hold.

AWOS-3 <b>118.525</b>	BOSTON CENTER <b>135.25 377.1</b>	UNICOM <b>122.8 (CTAF) 0</b>
--------------------------	--------------------------------------	---------------------------------



ELEV 302	<b>D</b>	TDZE 302
----------	----------	----------

800

2000

KOCET

\*LNAV only.

WOROS 2.7 NM to RW27

POTIC 1900

KOCET 4 NM Holding Pattern

089° → 2000

← 269°

GP 3.00° TCH 45

REIL Rwy 27

HIRL Rwy 9-27 0

6400 X 150

269° to RW27

342

CATEGORY	A	B	C	D
LPV DA	552-¾		250 (300-¾)	
LNAV/VNAV DA	758-1½		456 (500-1½)	
LNAV MDA	760-1	458 (500-1)	760-1¾	458 (500-1¾)
<b>C</b> CIRCLING	760-1 458 (500-1)	1000-1 698 (700-1)	1000-2 698 (700-2)	1000-2¼ 698 (700-2¼)