

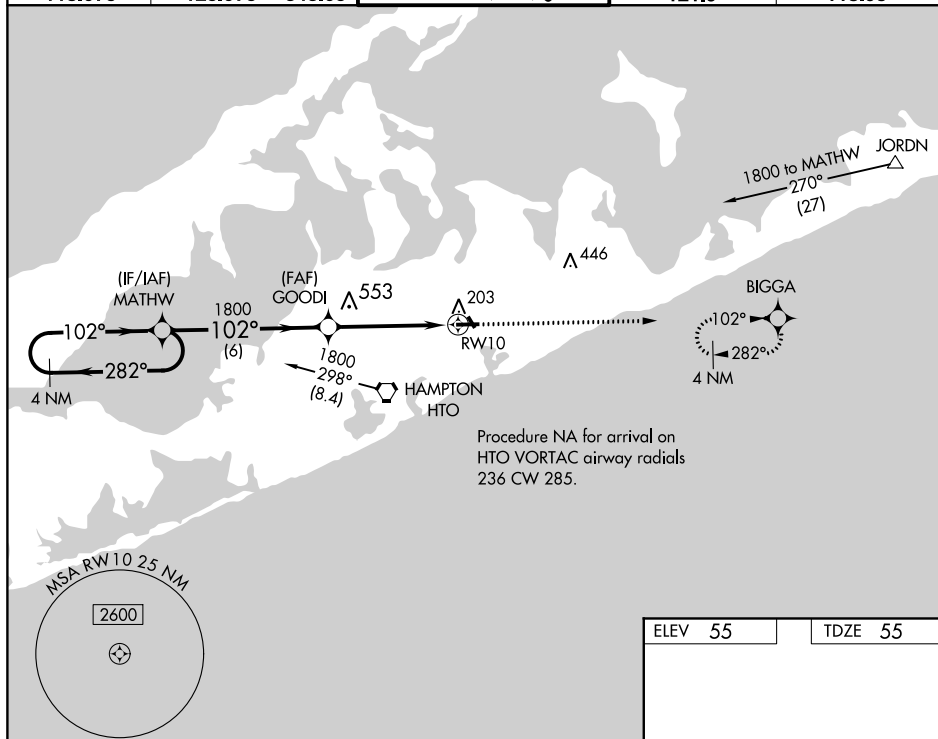
WAAS CH 40112 W10A	APP CRS 102°	Rwy Idg 4255 TDZE 55 Apt Elev 55
--	------------------------	---

RNAV (GPS) Z RWY 10
EAST HAMPTON (HTO)

NA Baro-VNAV NA when using Westhampton Beach altimeter setting. For uncompensated Baro-VNAV systems, LNAV/VNAV NA below -1.5°C (5°F) or above 54°C (130°F). DME/DME RNP-0.3 NA. Helicopter visibility requirement below 1 SM NA. When local altimeter setting not received, use Westhampton Beach altimeter setting and increase all DA 45 feet; increase LNAV/VNAV visibility ½ mile all Cts. Night landing: Rwy 10, 28 operational VGSI required, remain on or above VGSI glidepath until threshold.

MISSED APPROACH:
Climb to 2000 direct
BIGGA and hold.

AWOS-3PT 118.075	NEW YORK APP CON 125.975 343.65	EAST HAMPTON TOWER ★ 125.225 (CTAF) 0	GND CON 121.9	CLNC DEL 118.95
---------------------	------------------------------------	--	------------------	--------------------



Procedure NA for arrival on
HTO VORTAC airway radials
236 CW 285.

ELEV 55

TDZE 55

102° to RW10

4255 X 100

2000

0.6% UP

0.5%

TWR

34

10

28

MIRA Rwy 10-28

REIL Rwy 10 and 28

EAST HAMPTON, NEW YORK

Amdt 1A 20AUG15

EAST HAMPTON (HTO)

40°58'N - 72°15'W

RNAV (GPS) Z RWY 10

NE-2, 31 DEC 2020 to 28 JAN 2021

NE-2, 31 DEC 2020 to 28 JAN 2021