

WAAS CH 40009 W24A	APP CRS 236°	Rwy Idg TDZE Apt Elev 66 66
--	------------------------	---

RNAV (GPS) RWY 24

FRANCIS S GABRESKI (FOK)

⚠

⚠

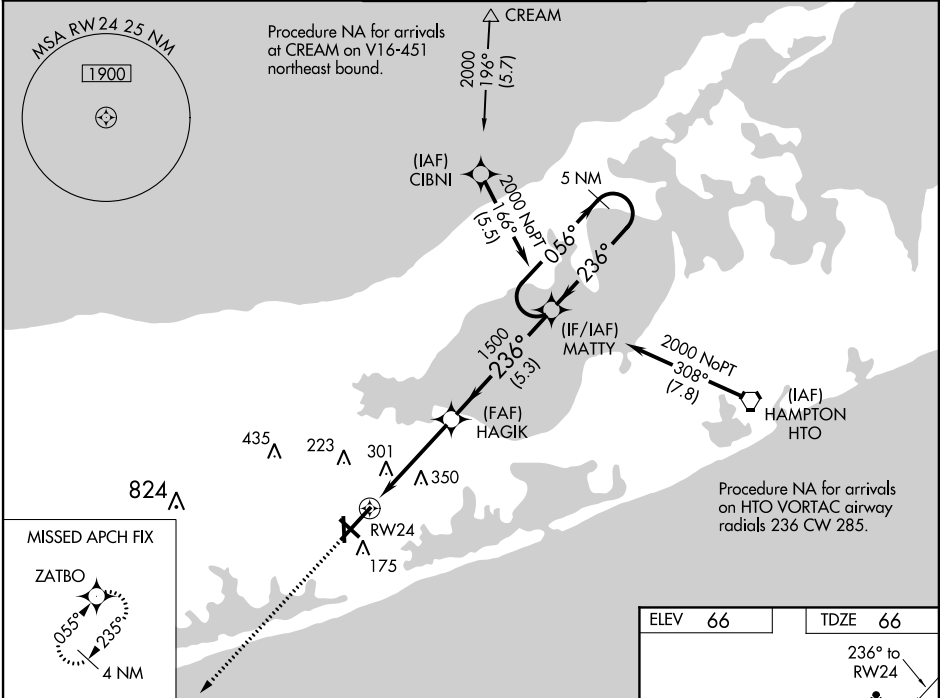
For uncompensated Baro-VNAV systems, LNAV/VNAV NA below -15°C (5°F) or above 43°C (109°F). DME/DME RNP-0.3 NA. When local altimeter setting not received, use Shirley altimeter setting: increase LPV DA to 293; increase LNAV/VNAV DA to 632 and LNAV/VNAV all Cats visibility 1/8 mile; increase all MDA 40 feet and Circling Cat D visibility 1/4 mile. Baro-VNAV and VDP NA when using Shirley altimeter setting. Circling Rwy 15 NA at night.

MALSR

MISSED APPROACH:

Climb to 2600 direct ZATBO and hold.

ASOS 119.925	NEW YORK APP CON 125.975 343.65	SUFFOLK COUNTY TOWER ★ 125.3 (CTAF) 236.6	GND CON 121.8 225.4	UNICOM 122.95
------------------------	---	---	-------------------------------	-------------------------



2600

ZATBO

VGSI and RNAV glidepath not coincident (VGSI Angle 3.00/TCH 77).

5 NM Holding Pattern

MATTY

HAGIK

RW24

*1.3 NM to RW24

*LNAV only

1500

2000

056°

236°

GP 3.00° TCH 55

CATEGORY	A	B	C	D
LPV DA	266-1/2 200 (200-1/2)			
LNAV/VNAV DA	605-1 539 (600-1 1/2)			
LNAV MDA	560-1/2 494 (500-1/2)	560-1 494 (500-1)		
CIRCLING	600-1 534 (600-1)	620-1 554 (600-1)	620-1 1/2 554 (600-1 1/2)	700-2 634 (700-2)

ELEV 66

TDZE 66

236° to RW24

HIRL Rwy 6-24

MIRL Rwy 15-33

REIL Rwy 6, 15, and 33