

LOC/DME I-FOK	APP CRS	Rwy Idg	9002
111.7	236°	TDZE	66
Chan 54		Apt Elev	66

ILS or LOC RWY 24

FRANCIS S GABRESKI (FOK)

▼

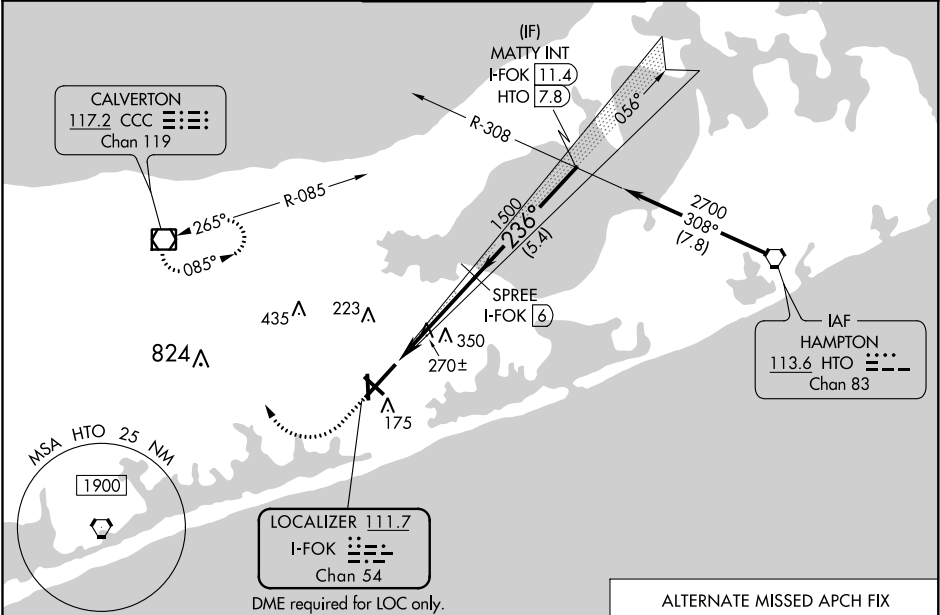
▲

Circling Rwy 15 NA at night.

MALSR

MISSED APPROACH: Climb to 880 then climbing right turn to 2000 direct CCC VOR/DME and hold.

ASOS	NEW YORK APP CON	SUFFOLK COUNTY TOWER ★	GND CON	UNICOM
119.925	125.975 343.65	125.3 (CTAF) 236.6	121.8 225.4	122.95



ELEV 66

TDZE 66

236° 4.3 NM from FAF

TWR 145

3002 X 150

5100 X 150

9002 X 150

0.7% UP 23

HIRL Rwy 6-24

MIRL Rwy 15-33

REIL Rws 6, 15, and 33

FAF to MAP 4.3 NM

Knots	60	90	120	150	180
Min:Sec	4:18	2:52	2:09	1:43	1:26

880

2000

CCC

VGSI and ILS glidepath not coincident (VGSI Angle 3.00/TCH 77).

MATTY INT I-FOK 11.4

*LOC only

*I-FOK

I-FOK 1.7

I-FOK 2.9

SPREE I-FOK 6

1500

236°

2700

GS 3.00° TCH 60

1.2 NM

3.1 NM

5.4 NM

CATEGORY	A	B	C	D
S-ILS 24	266-½ 200 (200-½)			
S-LOC 24	520-½ 454 (500-½)		520-¾ 454 (500-¾)	
CIRCLING	600-1 534 (600-1)	620-1 554 (600-1)	700-1¾ 634 (700-1¾)	740-2¼ 674 (700-2¼)