

WAAS CH 56430 W06A	APP CRS 058°	Rwy Idg TDZE 186 Apt Elev 213
--	------------------------	---

RNAV (GPS) Z RWY 6

TRENTON MERCER (TTN)

▼

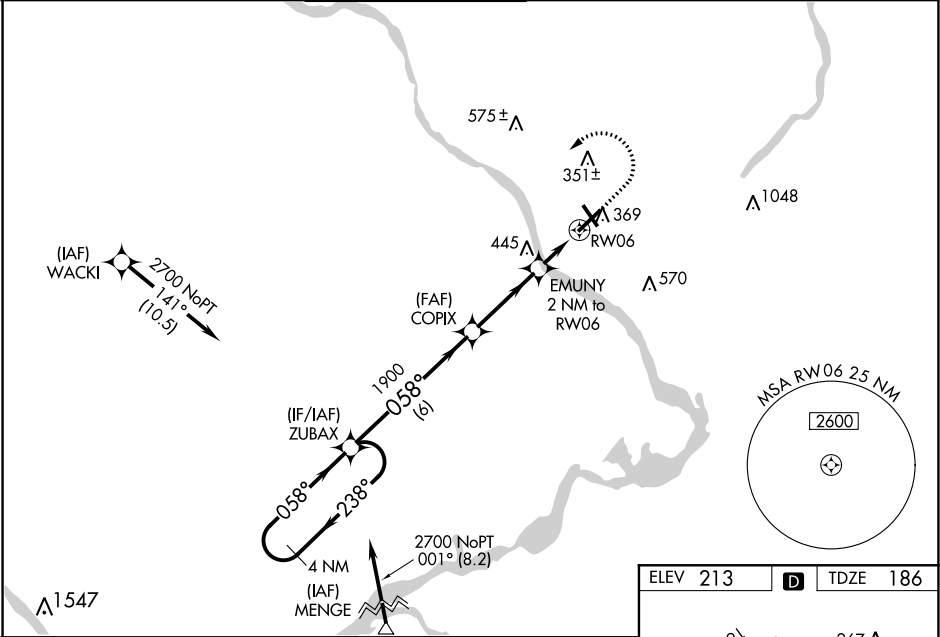
⚠

Baro-VNAV NA when using Northeast Philadelphia altimeter setting. For uncompensated Baro-VNAV systems, LNAV/VNAV NA below -13°C (8°F) or above 54°C (130°F). DME/DME RNP-0.3 NA. When local altimeter setting not received use Northeast Philadelphia altimeter setting: increase LPV DA to 435 feet; increase LNAV/VNAV DA to 658 feet, and all Cats visibility 1/8 SM; increase all MDA 60 feet and LNAV Cat C/D visibility 1/4 SM and Circling Cat C visibility 1/4 SM. Night Landing: Rwy 34 operational VGSI required, remain on or above VGSI glidepath until threshold.

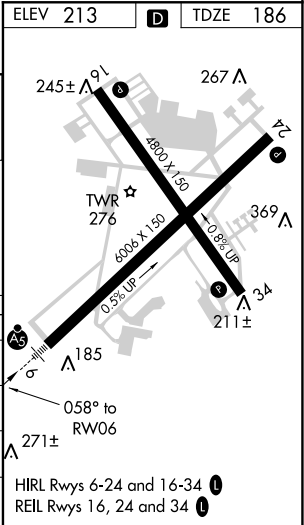
MALSR

MISSED APPROACH: Climb to 1500 then climbing left turn to 2700 direct ZUBAX and hold.

ATIS 126.775	PHILADELPHIA APP CON 123.8 291.7	TRENTON TOWER ★ 120.7 (CTAF) 0 257.8	GND CON 121.9 257.8	CLNC DEL 121.9 257.8	UNICOM 122.95
------------------------	--	--	-------------------------------	--------------------------------	-------------------------



4 NM Holding Pattern				
ZUBAX				
GP 3.00° TCH 60				
6 NM 3.3 NM 0.5 1.5 NM				
CATEGORY	A	B	C	D
LPV DA	388-1/2		202 (200-1/2)	
LNAV/VNAV DA	611-7/8		425 (400-7/8)	
LNAV MDA	700-1/2	514 (500-1/2)	700-1	514 (500-1)
CIRCLING	700-1	487 (500-1)	760-1 1/2 547 (600-1 1/2)	960-2 1/2 747 (800-2 1/2)



NE-2, 31 DEC 2020 to 28 JAN 2021

NE-2, 31 DEC 2020 to 28 JAN 2021