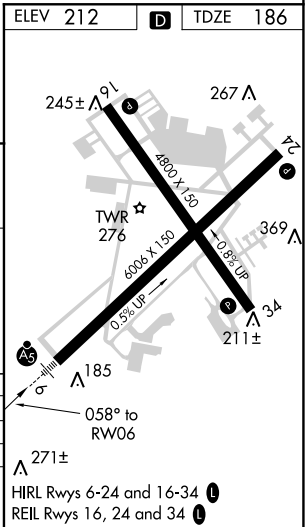
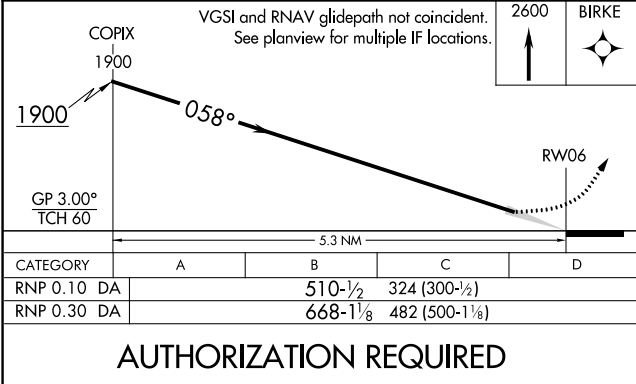
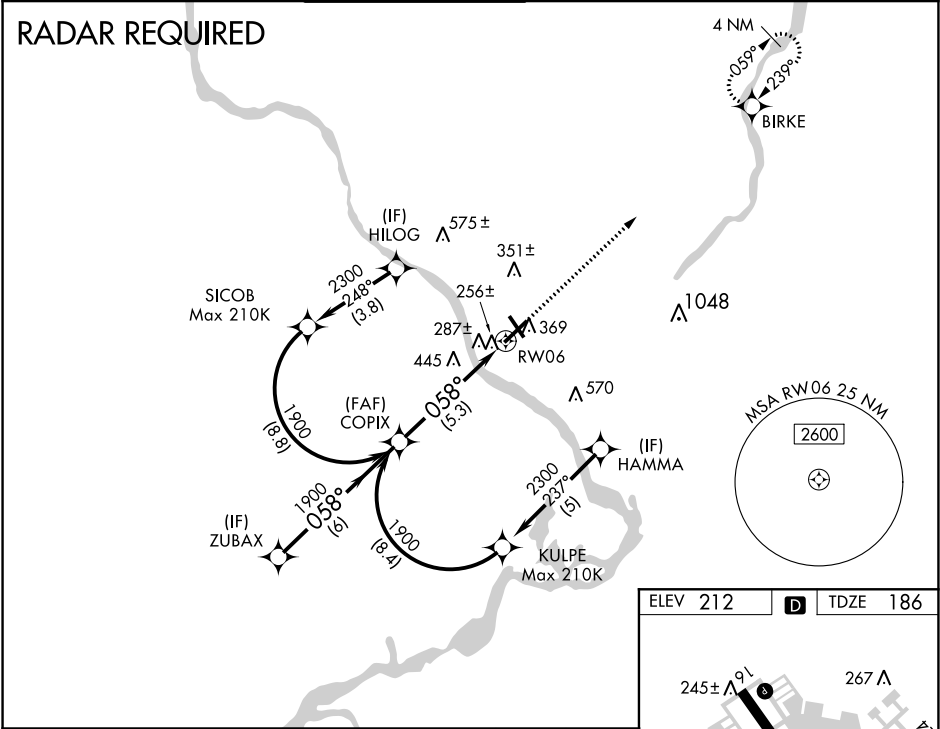


APP CRS	Rwy Idg	<b>6006</b>
<b>058°</b>	TDZE	<b>186</b>
	Apt Elev	<b>212</b>

RNAV (RNP) Y RWY 6  
TRENTON MERCER (TTN)

<b>▽</b> For uncompensated Baro-VNAV systems, procedure NA below -13°C (8°F) or above 54°C (130°F). GPS required. For inoperative MALSR, increase RNP 0.10 DA all Cats visibility to 1 mile, increase RNP 0.30 DA all Cats visibility to 1½ mile.	MALSR  MISSED APPROACH: Climb to 2600 direct BIRKE and hold.
--	--

ATIS <b>126.775</b>	PHILADELPHIA APP CON <b>123.8 291.7</b>	TRENTON TOWER ★ <b>120.7 (CTAF) 0 257.8</b>	GND CON <b>121.9 257.8</b>	CLNC DEL <b>121.9 257.8</b>	UNICOM <b>122.95</b>
------------------------	--	--	-------------------------------	--------------------------------	-------------------------



NE-2, 31 DEC 2020 to 28 JAN 2021

NE-2, 31 DEC 2020 to 28 JAN 2021