

WAAS CH <b>40230</b> <b>W34A</b>	APP CRS <b>338°</b>	Rwy Idg TDZE <b>202</b> Apt Elev <b>213</b>
--	------------------------	---

RNAV (GPS) RWY 34

TRENTON MERCER (TTN)

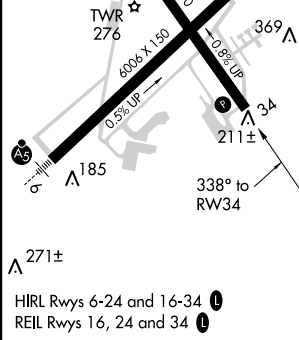
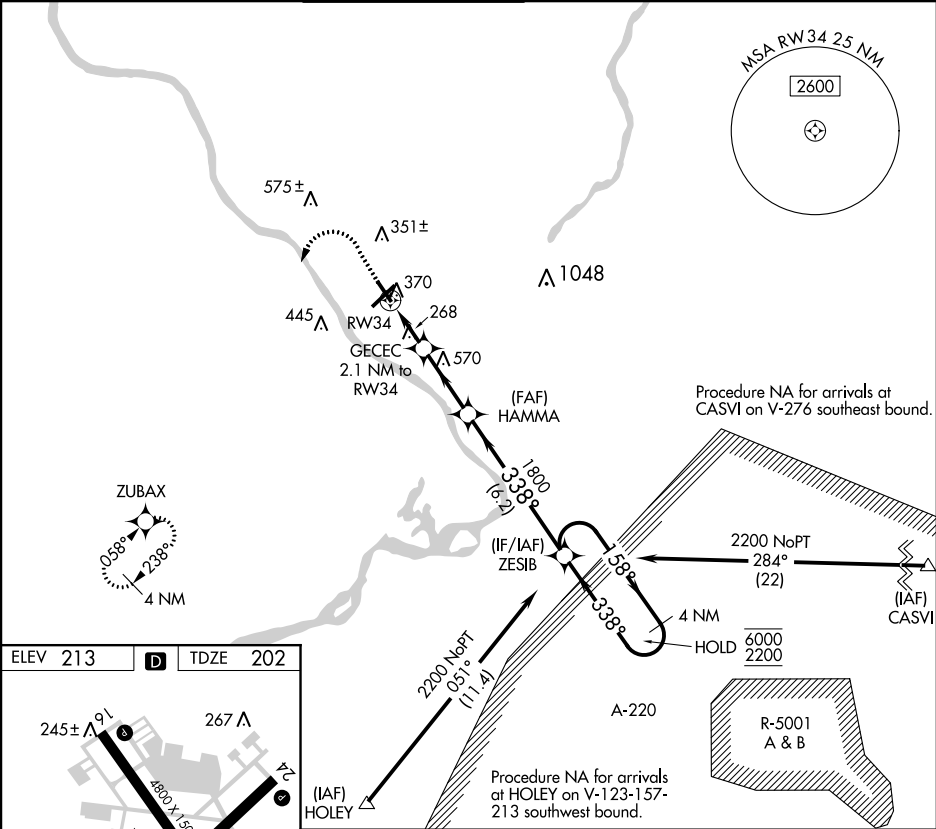
RNP APCH.

▼ Rwy 34 helicopter visibility reduction below 1 SM NA. Straight-in Rwy 34 at night, operational

▲ VGSi required, remain on or above VGSi glidepath until threshold. When Circling to Rwy 34 at night, operational VGSi required, remain on or above VGSi glidepath until threshold.

MISSED APPROACH:  
(Do not exceed 250K until ZUBAX)  
Climb to 700 then climbing left turn to 2700 direct ZUBAX and hold.

ATIS <b>126.775</b>	PHILADELPHIA <b>123.8</b>	APP CON <b>291.7</b>	TRENTON TOWER★ <b>120.7 (CTAF) 0 257.8</b>	GND CON <b>121.9 257.8</b>	CLNC DEL <b>121.9 257.8</b>	UNICOM <b>122.95</b>
------------------------	------------------------------	-------------------------	---	-------------------------------	--------------------------------	-------------------------



700	2700	ZUBAX	HAMMA	ZESIB	4 NM Holding Pattern
3.00° TCH 50	GECEC 2.1 NM to RW34	1800	158°	6000	2200
2.1 NM	2.9 NM	6.2 NM			
CATEGORY	A	B	C	D	
LP MDA	520-1	318 (400-1)			
LNAV MDA	620-1	418 (500-1)	620-1½	418 (500-1½)	
CIRCLING	680-1	467 (500-1)	760-1½	960-2½	
			547 (600-1½)	747 (800-2½)	

NE-2, 31 DEC 2020 to 28 JAN 2021

NE-2, 31 DEC 2020 to 28 JAN 2021