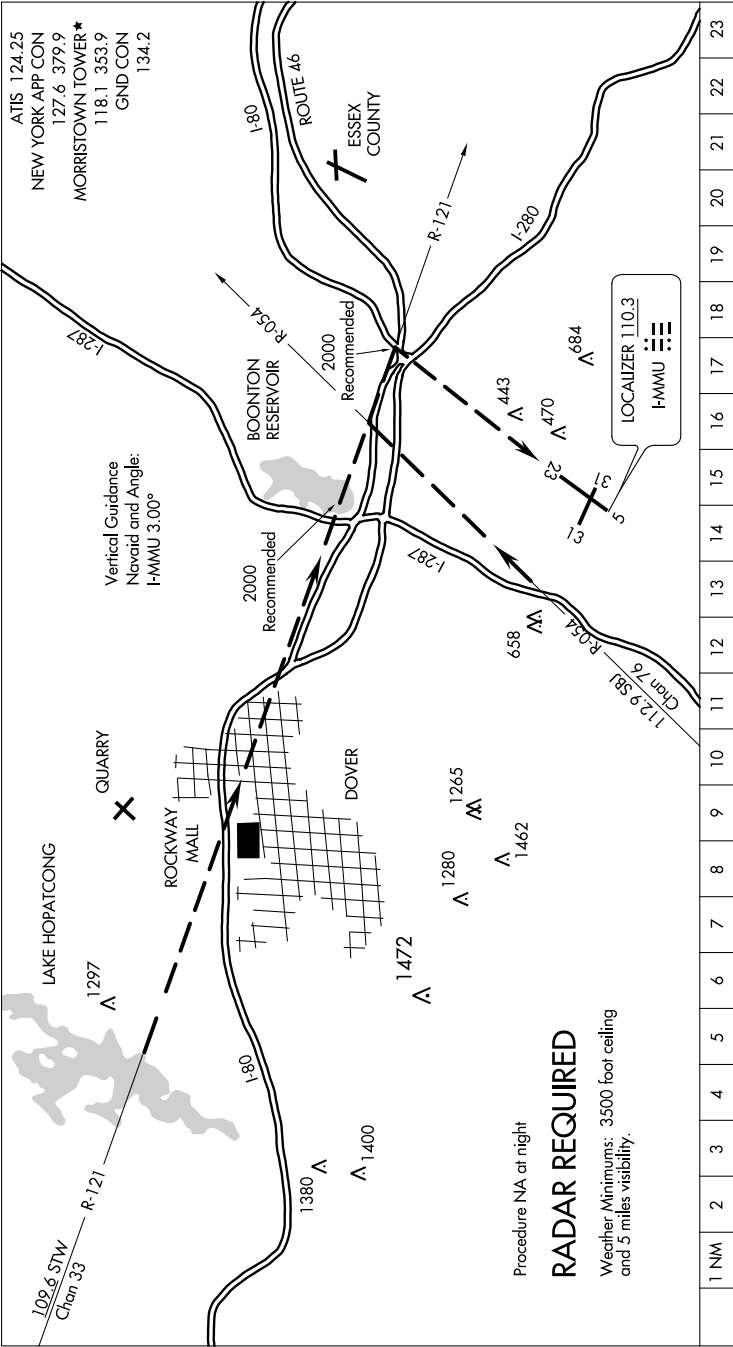


NE-2, 31 DEC 2020 to 28 JAN 2021



Procedure NA at night  
**RADAR REQUIRED**  
Weather Minimums: 3500 foot ceiling  
and 5 miles visibility.

1	2	3	4	5	6	7	8	9	10	11	12	13	14	15	16	17	18	19	20	21	22	23
<p>When approaching the airport from the northwest, expect vectors to intercept the STW R-121. When you see the highway junction of Rts. 46, 80, and 280, proceed to that point to turn final for Rwy 23.</p> <p>When approaching the airport from the southwest, expect vectors to intercept the SBJ R-054. When you see Rt. 287, follow it until turning base over Rt. 80. Turn final over the junction of Rts. 46, 80 and 280 for Rwy 23.</p>																						