


WAAS CH 53723 W10A	APP CRS 101°	Rwy Idg TDZE Apt Elev	6003 74 85
--	------------------------	-----------------------------	---------------------------------------

RNAV (GPS) RWY 10
MILLVILLE MUNI (MIV)

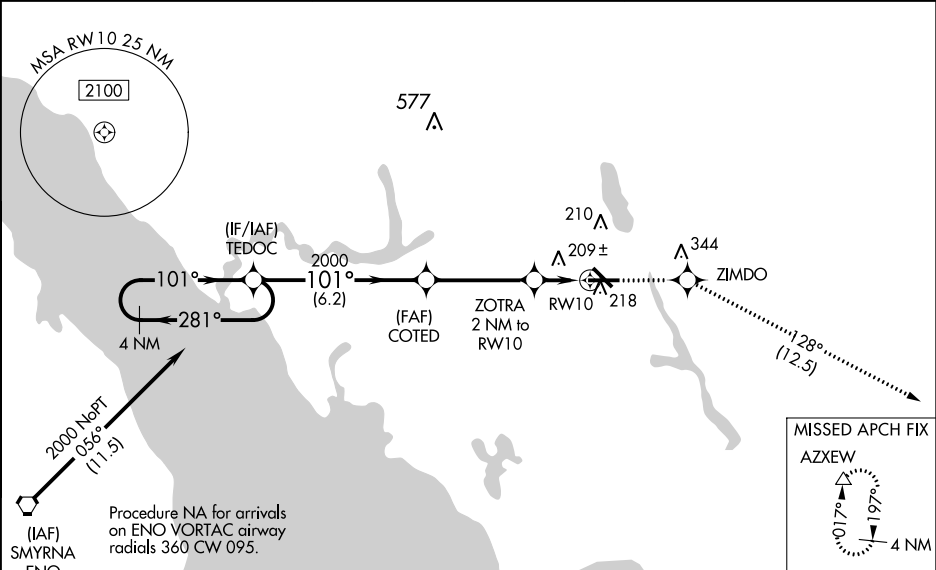
⚠ When VGSI inop, Circling Rwy 32 NA at night. For uncompensated Baro-VNAV systems, LNAV/VNAV NA below -15°C (5°F) or above 43°C (109°F). DME/DME RNP-0.3 NA. When local altimeter setting not received, use Atlantic City altimeter setting and increase LPV DA to 330, LNAV/VNAV DA to 571, and all MDA 60 feet; increase LNAV/VNAV all Cat and LNAV Cat C and D visibility ¼ mile. Baro-VNAV and VDP NA when using Atlantic City altimeter setting. For inop MALSR when using Atlantic City altimeter setting, increase LNAV/VNAV all Cat visibility to 1%.

MALSR



MISSED APPROACH: Climb to 2000 direct ZIMDO and on track 128° to AZXEW and hold.

ASOS 119.6	ATLANTIC CITY APP CON 124.6 327.125	UNICOM 123.0 (CTAF) 0
----------------------	---	---------------------------------



ELEV 85 TDZE 74

4 NM Holding Pattern

TEDOC

COTED

ZOTRA 2 NM to RWY10

RWY10

AZXEW

GP 3.00° TCH 52

*LNAV only

*760

101° to RWY10

CATEGORY	A	B	C	D
LPV DA	274-1½ 200 (200-½)			
LNAV/VNAV DA	515-1 441 (500-1)			
LNAV MDA	460-½ 386 (400-½)	460-5⁄8 386 (400-%)		
CIRCLING	520-1 435 (500-1)	540-1 455 (500-1)	540-1½ 455 (500-1½)	640-2 555 (600-2)

MIRL Rwy 10-28 and 14-32 0