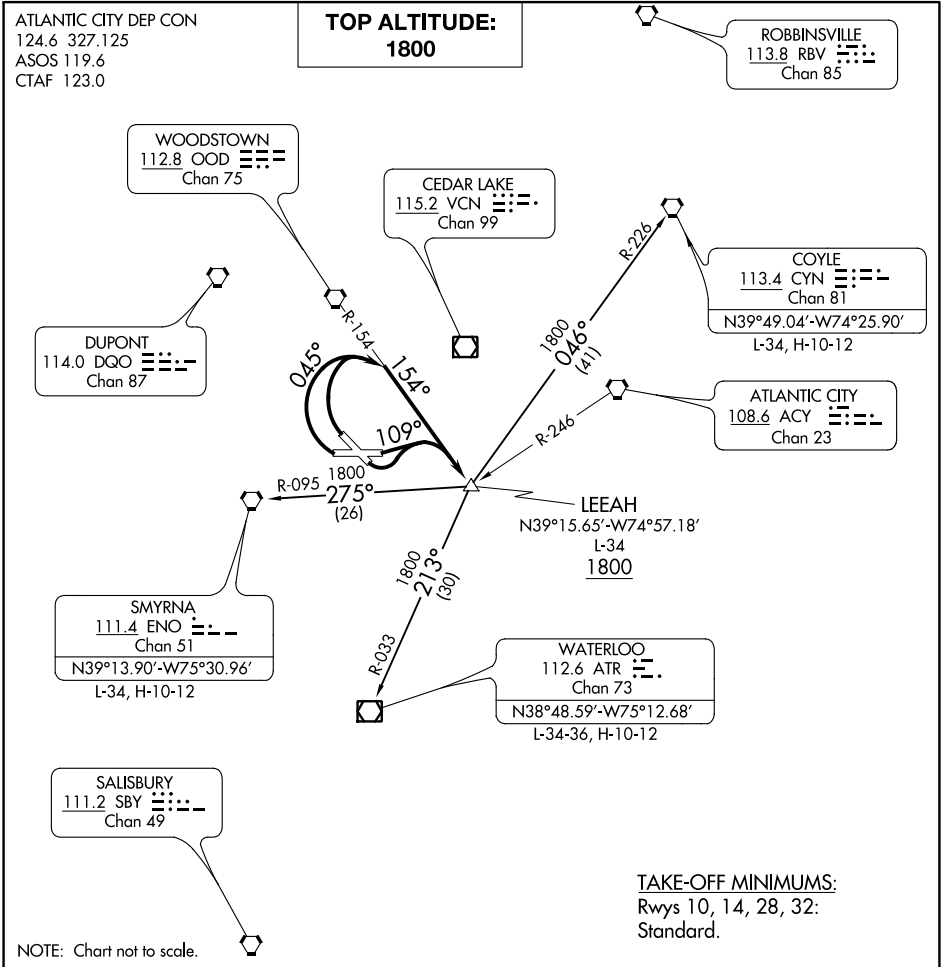


LEEAH FIVE DEPARTURE



DEPARTURE ROUTE DESCRIPTION

TAKEOFF RUNWAYS 28, 32: Turn right heading 045° and OOD R-154 to LEEAH INT, then via (transition) or (assigned route). Thence....

TAKEOFF RUNWAYS 10, 14: Turn left heading 109° and OOD R-154 to LEEAH INT, then via (transition) or (assigned route). Thence....

....Maintain 1800, expect filed altitude/flight level 10 minutes after departure.

COYLE TRANSITION (LEEAH5.CYN): From over LEEAH INT via CYN R-226 to CYN VORTAC.

SMYRNA TRANSITION (LEEAH5.ENO): From over LEEAH INT via ENO R-095 to ENO VORTAC.

WATERLOO TRANSITION (LEEAH5.ATR): From over LEEAH INT via ATR R-033 to ATR VOR/DME.