

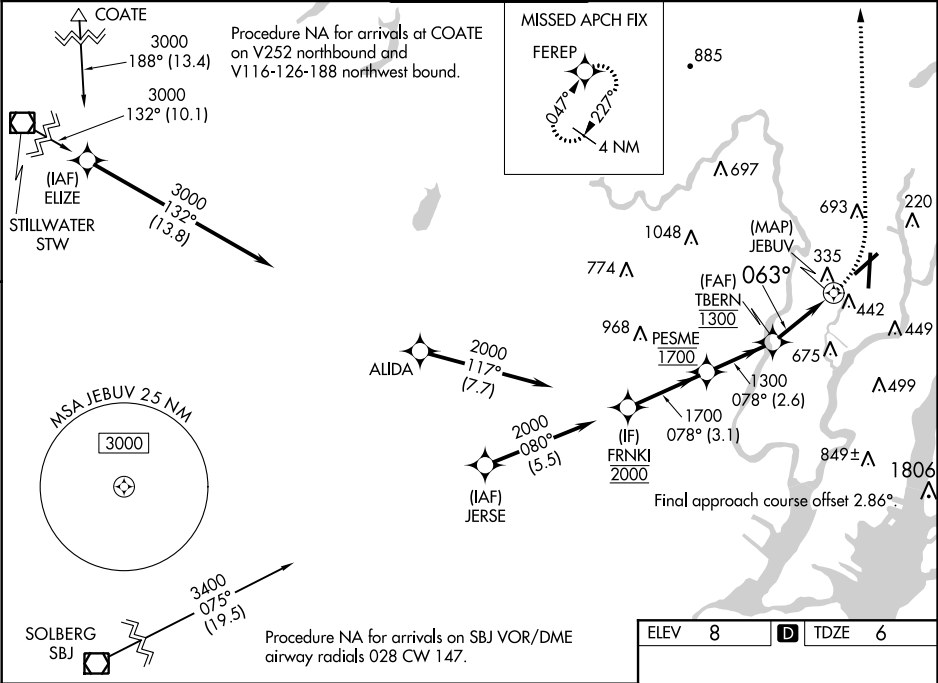
WAAS CH <b>65634</b> <b>W06B</b>	APP CRS <b>063°</b>	Rwy Idg TDZE Apt Elev	<b>6013</b> <b>6</b> <b>8</b>
--	------------------------	-----------------------------	-------------------------------------

RNAV (GPS) X RWY 6

TETERBORO (TEB)

RNP APCH	For uncompensated Baro-VNAV systems, LNAV/VNAV NA below -13°C (9°F) or above 54°C (130°F). Circling NA for Cats B, C and D NW of Rwy 6 and 19. For inop ALS, increase LPV all Cats visibility to 1½ SM, LNAV/VNAV all Cats visibility to 2½ SM, and LNAV Cats A/B visibility to 1¼ SM. When Circling to Rwy 24 at night, operational VGSI required, remain on or above VGSI glidepath until threshold.	MALSR (AS)	MISSED APPROACH: Climbing left turn to 2000 direct FERP and hold.
----------	--	---------------	--

D-ATIS <b>114.2 132.85</b>	NEW YORK APP CON <b>127.6 379.9</b>	TETERBORO TOWER <b>119.5</b>	GND CON <b>121.9</b>	CLNC DEL <b>128.05</b>	CPDLC
-------------------------------	--	---------------------------------	-------------------------	---------------------------	-------



FRNKI	2000	078°	PESME	1700	TBERN	1300	063°	JEBUV	1300	0.8 NM to JEBUV	FERP
GP 3.00° TCH 55											
	3.1 NM		2.6 NM		2 NM		0.8	1.1			
CATEGORY	A		B		C		D				
LPV DA			459/55		453 (500-1)						
LNAV/VNAV DA			672-1⅞		666 (700-1⅞)						
LNAV MDA	660/45		654 (700-¾)		660-1⅜		654 (700-1⅜)				
CIRCLING	760-1¼		752 (800-1¼)		820-2½ 812 (900-2½)		1040-3 1032 (1100-3)				

