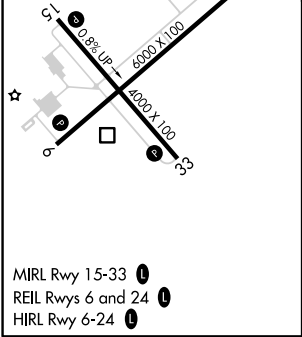
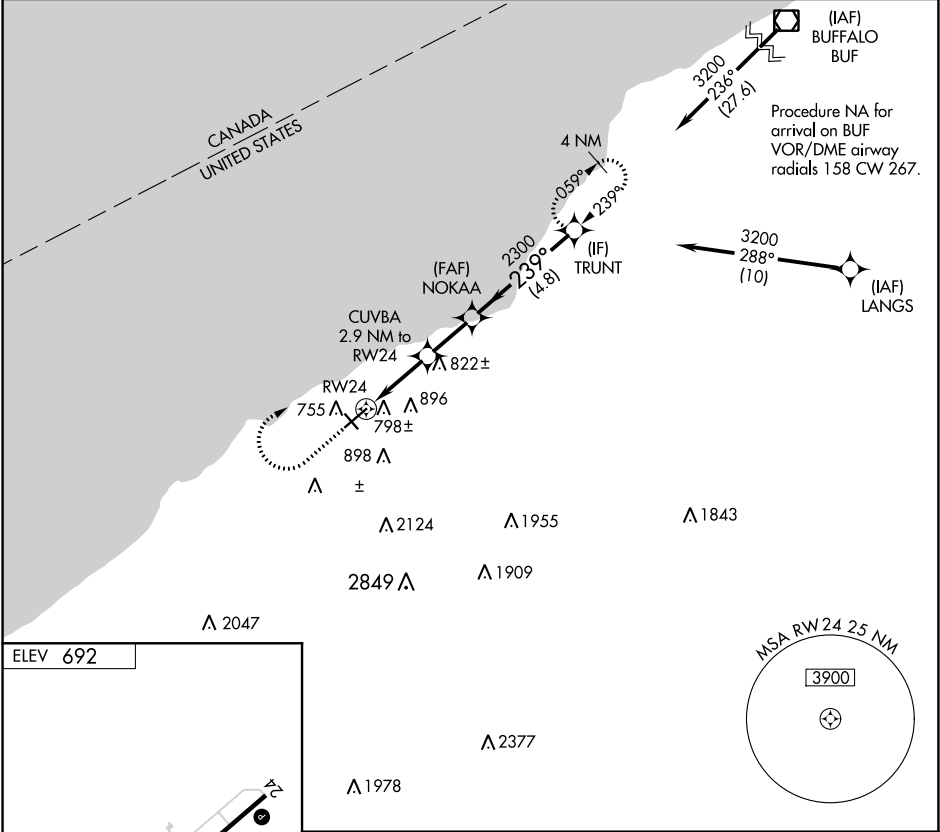


APP CRS	Rwy Idg	N/A
239°	TDZE	N/A
	Apt Elev	692

RNAV (GPS)-A
CHAUTAUQUA COUNTY/DUNKIRK (DKK)

RNP APCH.	MISSED APPROACH: Climb to 1900 then climbing right turn to 3200 direct TRUNT and hold.
 -20°C	Circling Cat D NA southeast of Rwy 6 and southwest of Rwy 33. Circling Rwy 6, 24, 33 NA at night.

ASOS 119.275	BUFFALO APP CON 126.5 317.6	UNICOM 123.075 (CTAF) 0
-----------------	--------------------------------	----------------------------



1900	3200	TRUNT	Visual Segment - Obstacles.
CUVBA 2.9 NM to RW24	NOKAA	TRUNT	
RW24	2300	3200	
2.9 NM	2.1 NM	4.8 NM	
CATEGORY	A	B	C
CIRCLING	1200-1 508 (600-1)	1320-1 628 (700-1)	1640-2 3/4 948 (1000-2 3/4)
			2140-3 1448 (1500-3)

NE-2, 31 DEC 2020 to 28 JAN 2021

NE-2, 31 DEC 2020 to 28 JAN 2021