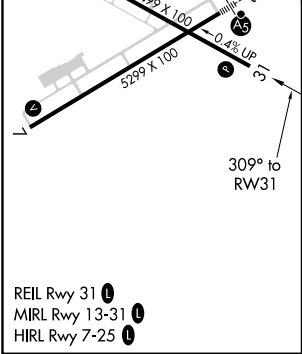
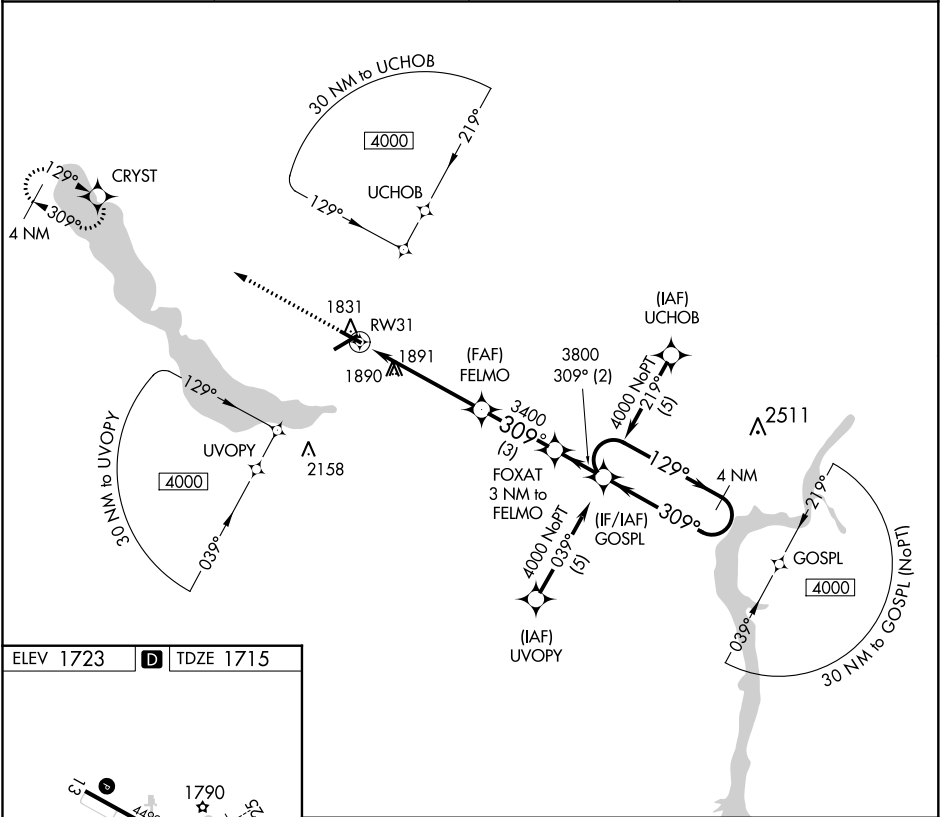


APP CRS 309°	Rwy Idg TDZE Apt Elev	4499 1715 1723
------------------------	-----------------------------	---

RNAV (GPS) RWY 31
CHAUTAUQUA COUNTY/JAMESTOWN (JHW)

NA DME/DME RNP-0.3 NA. Rwy 31 Straight-in/Circling and Circling to Rwy 13 NA at night. When local altimeter setting not received, use Dunkirk altimeter setting: increase all MDAs 200 feet and visibility LNAV Cats C/D ¾ SM, Circling Cat C ½ SM and Circling Cat D ¾ SM. Helicopter visibility reduction below 1 SM NA.	MISSED APPROACH: Climb to 4000 direct CRYST WP and hold.
---	--

AWOS-3PT 118.425	BUFFALO APP CON ★ 126.05	CLNC DEL 126.05	UNICOM 122.7 (CTAF) 0
----------------------------	------------------------------------	---------------------------	---------------------------------



4000	CRYST	FOXAT 3 NM to FELMO	GOSPL	4 NM Holding Pattern
		FELMO		
		RW31		
		3.10° TCH 50		
		5 NM	3 NM	2 NM
CATEGORY	A	B	C	D
LNAV MDA	2200-1	485 (500-1)	2200-1¼ 485 (500-1¼)	2200-1½ 485 (500-1½)
C CIRCLING	2200-1	477 (500-1)	2240-1½ 517 (600-1½)	2340-2 617 (700-2)

NE-2, 31 DEC 2020 to 28 JAN 2021

NE-2, 31 DEC 2020 to 28 JAN 2021