

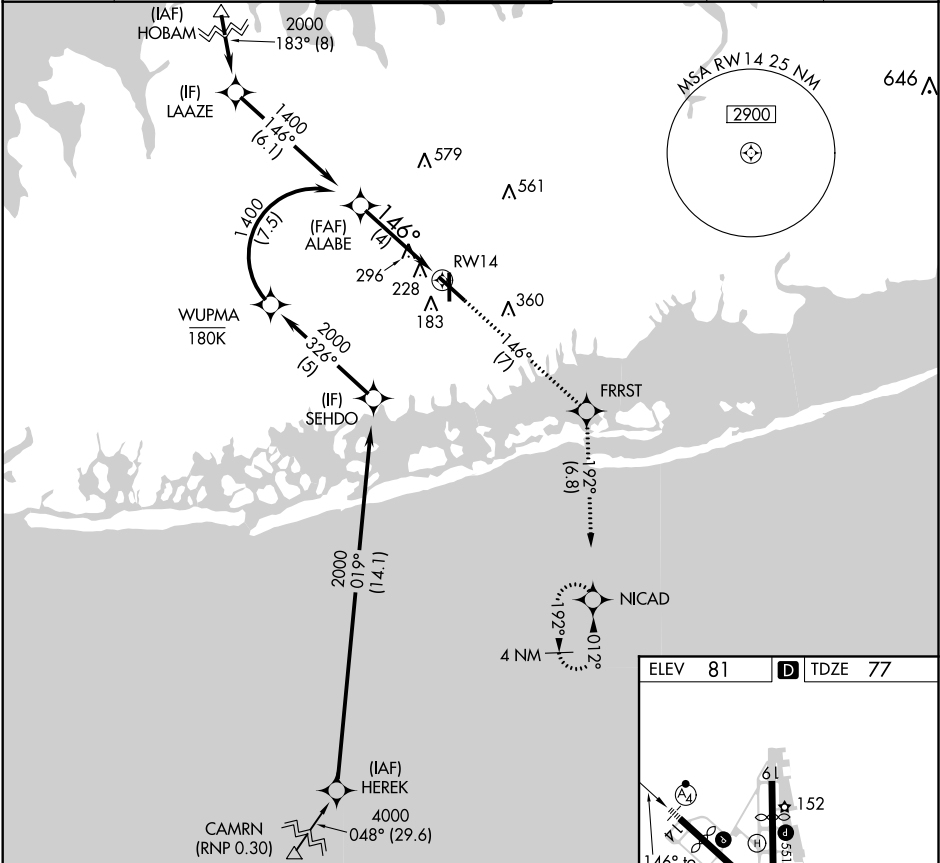
APP CRS	Rwy Idg	6157
146°	TDZE	77
	Apt Elev	81

RNAV (RNP) Z RWY 14

REPUBLIC (F'RG)

RNP AR APCH. RF required from HEREK.	MALSF	MISSED APPROACH: Climb to 2000 on track 146° to FRRST and on track 192° to NICAD and hold.
▼ For uncompensated Baro-VNAV systems, procedure NA below -12°C or above 48°C. For inop ALS, increase all Cats visibility to 1 3⁄8 SM.	⬮	

ATIS	NEW YORK APP CON	REPUBLIC TOWER ★	GND CON	CLNC DEL	UNICOM
126.65	128.125 269.0	118.8 (CTAF) 279.65	121.6 269.6	128.25	122.95



VGSI and RNAV glidepath not coincident (VGSI Angle 3.00/TCH 50).

ALABE 1400 146°

GP 3.00° TCH 60

4 NM

RW14

See planview for multiple IF locations.

CATEGORY	A	B	C	D
RNP 0.30 DA		502-7 <sup>8</sup>	425 (500-7 <sup>8</sup> )	

**AUTHORIZATION REQUIRED**

ELEV 81	TDZE 77
---------	---------

MIRL Rwy 1-19

MIRL Rwy 14-32

REIL Rws 1, 19, and 32

NE-2, 31 DEC 2020 to 28 JAN 2021

NE-2, 31 DEC 2020 to 28 JAN 2021