

WAAS CH 45513 W13A	APP CRS 128°	Rwy Idg 10000 TDZE 75 Apt Elev 75
--	------------------------	--

RNAV (GPS) Y RWY 13

ATLANTIC CITY INTL (ACY)

▼

▲

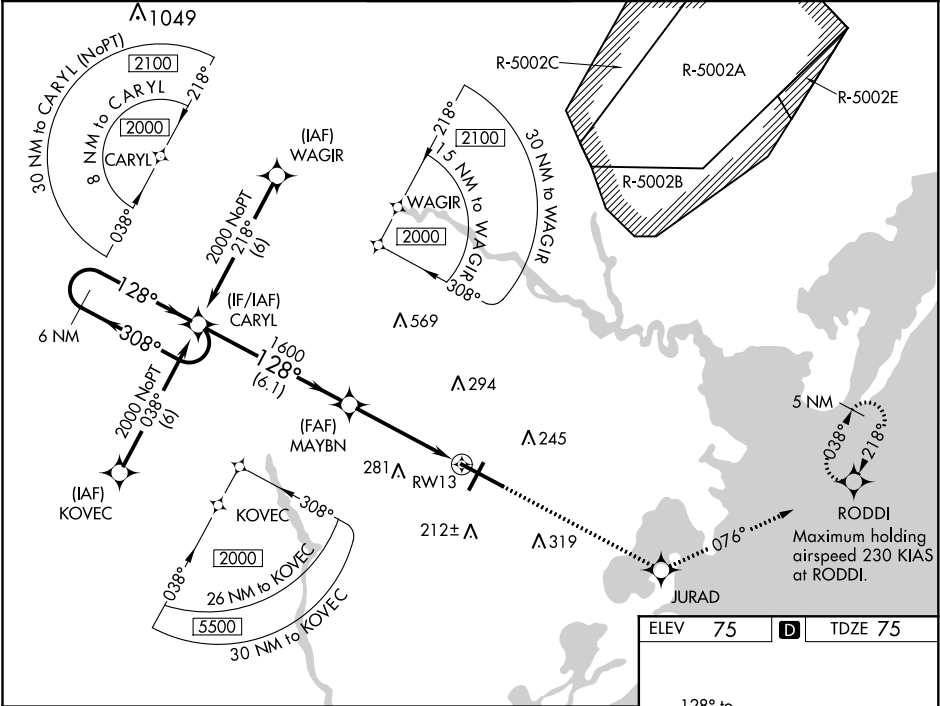
ASR

For inoperative MALSR, increase LPV Cat E visibility to RVR 4000, LNAV/VNAV Cat E visibility to 1½, and LNAV Cat D visibility to RVR 6000, Cat E visibility to 1½. For uncompensated Baro-VNAV systems, LNAV/VNAV NA below -15°C (5°F) or above 48°C (118°F). DME/DME RNP-0.3 NA.

MALSR

MISSED APPROACH: Climb to 2000 direct JURAD and on track 076° to RODDI and hold.

ATIS 125.725 316.15	ATLANTIC CITY APP CON 124.6 327.125	ATLANTIC CITY TOWER 120.3 239.0	GND CON 121.9 284.6	CLNC DEL 127.85 353.775
-------------------------------	---	---	-------------------------------	-----------------------------------



6 NM Holding Pattern

2000

GP 3.00°
TCH 58

VGSI and RNAV glidepath not coincident (VGSI Angle 3.00/TCH 71).

CARYL

MAYBN

JURAD

RODDI

2000

JURAD

Ir 076°

RODDI

*1.2 NM to RW13

*LNAV only

6.1 NM

3.4 NM

1.2 NM

CATEGORY	A	B	C	D	E
LPV DA	275/18 200 (200-½)				
LNAV/VNAV DA	475/40 400 (400-¾)				
LNAV MDA	520/24 445 (500-½)	520/40 445 (500-¾)	520/50 445 (500-1)		
CIRCLING	540-1 465 (500-1)	540-1½ 465 (500-1½)	640-2 565 (600-2)	760-2½ 685 (700-2½)	

