

## HI-ILS or LOC RWY 13

LOC/DME I-PVO <b>109.1</b> Chan <b>28</b>	APCH CRS <b>128°</b>	Rwy Idg TDZE Arpt Elev <b>75</b> <b>75</b>
---	-------------------------	--

JAL-669 [USAF]

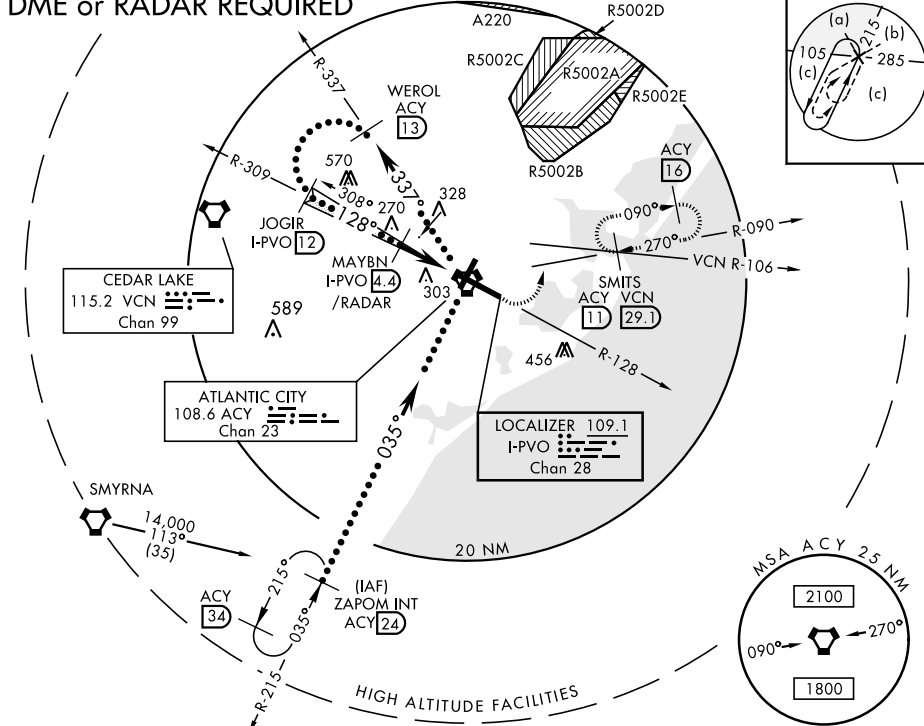
ATLANTIC CITY INTL (KACY)

<p>▼ * When ALS inop, increase RVR to 40 and vis to <math>\frac{3}{4}</math> mile.</p> <p>▲ ** When ALS inop, increase RVR to 50 and vis to 1 mile.</p>	<p>MALSR</p> <p><b>A5</b></p>
---	-------------------------------

MISSED APPROACH: Climb to 600 then climbing left turn to 2000 via ACY R-090 to SMITS INT/ACY 11 DME and hold; or when directed by ATC, climb to 600 then climbing left turn to 2000 via heading 076° and VCN R-106 to SMITS INT/VCN 29.1 DME and hold E, RT, hdg 286° inbound.

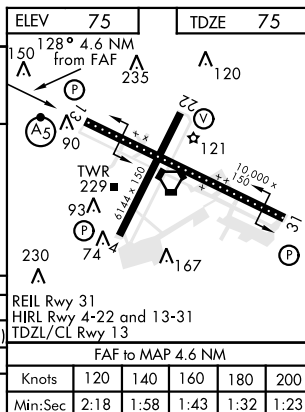
ATIS <b>125.725 316.15</b>	ATLANTIC CITY APP CON 130°- 309° <b>124.6 327.125</b> 310°- 129° <b>134.25 292.2</b>	ATLANTIC CITY TOWER <b>120.3 239.0</b>	GND CON <b>121.9 284.6</b>	CLNC DEL <b>127.85 353.775</b>	ASR
-------------------------------	--	---	-------------------------------	-----------------------------------	-----

## DME or RADAR REQUIRED



EMERG SAFE ALT 100 NM 4200

WEROL R-337 ACY 13			Use I-PVO DME when on the LOC course			600			2000			SMITS ACY 11		
JOGIR I-PVO 12			MAYBN I-PVO 4.4 /RADAR			I-PVO DME 7			ZAPOM INT R-215 ACY 24			14,000		
2000			1600			4000			GS 3.00° TCH 58			VGS and ILS glidepath not coincident		
CATEGORY			C			D			E					
S-ILS 13 *			275/18 200			(200-½)			275/24 200 (200-½)					
S-LOC 13 **			420/24 345 (400-½)			420/40 345 (400-¾)								
CIRCLING			540-1½ 465 (500-1½)			640-2 565 (600-2)			760-2½ 685 (700-2½)					



ATLANTIC CITY, NEW JERSEY

39°27'N-74°35'W

ATLANTIC CITY INTL (KACY)

Amdt 4C 04FEB16

## HI-ILS or LOC RWY 13