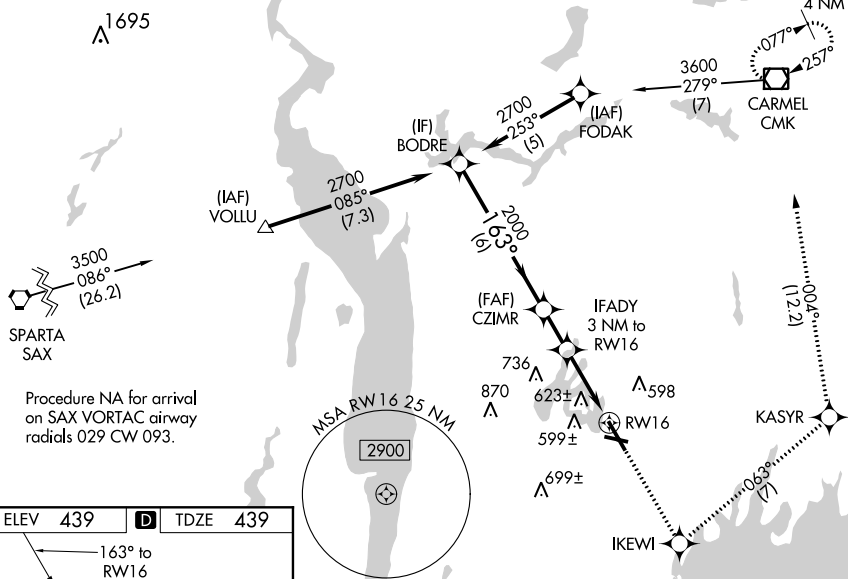


RNAV (GPS) Y RWY 16

MISSED APPROACH: Climb to 2300
direct KEWI and left turn on track
063° to KASYR and on track 004°
to CMK VOR/DME and hold.

CPDLC

REIL Rwy 11 and 34 (L)
HIRL Rwy 16-34 (L)
MIRL Rwy 11-29 (L)
TDZ/CL Rwy 16 (L)

		* LNAV only.		
CATEGORY	A	B	C	D
LPV DA	689/24		250 (300-½)	
LNAV/VNAV DA	978-1½		539 (600-1½)	
LNAV MDA	1060/24 621 (700-½)		1060/60 621 (700-1¼)	1060-1½ 621 (700-1½)
CIRCLING	1060-1 621 (700-1)		1080-1¾ 641 (700-1¼)	1200-2½ 761 (800-2½)