

WAAS CH 90132 W06A	APP CRS 060°	Rwy ldg TDZE 586 Apt Elev 592
--	------------------------	---

RNAV (GPS) RWY 6

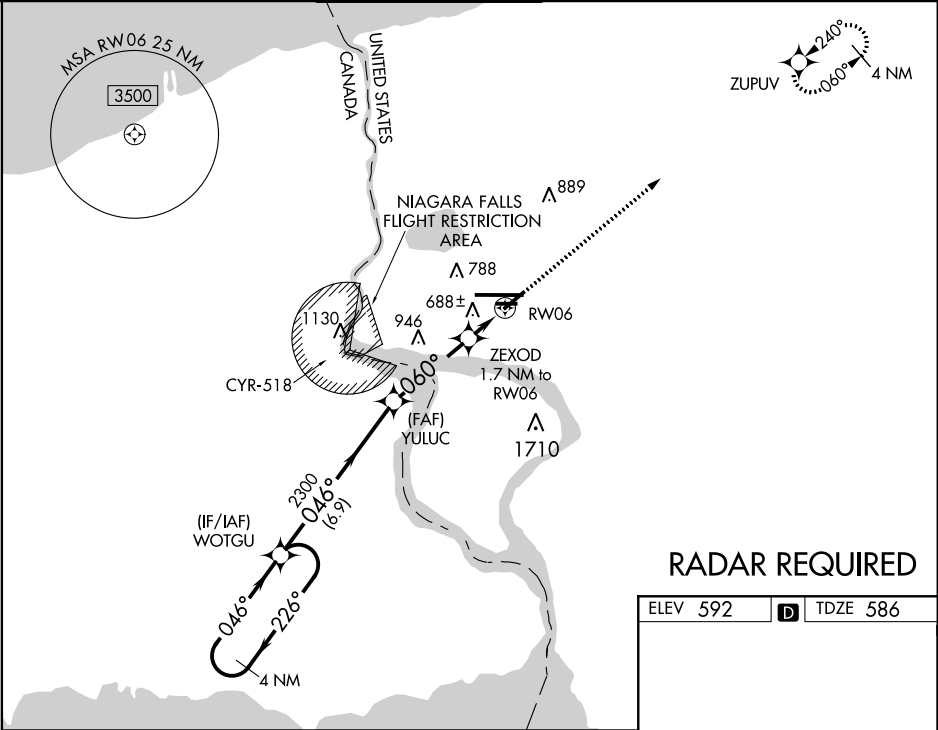
NIAGARA FALLS INTL (IAG)

RNP APCH

Baro-VNAV NA when using Buffalo Niagara Intl altimeter setting. For uncompensated Baro-VNAV systems, LNAV/VNAV NA below -18°C (0°F) or above 54°C (130°F). When local altimeter setting not received, use Buffalo Niagara Intl altimeter setting and increase all DA 51 feet and all MDA 60 feet, increase LNAV Cat C and D visibility ½ SM and Circling Cat C and D ¼ SM. Rwy 6, 10R, 24, 28L helicopter visibility reduction below 1 SM NA. Straight-in Rwy 6 NA at night, Circling Rwy 6, 10R, 24, 28L NA at night.

MISSED APPROACH:
Climb to 3600 direct ZUPUV and hold.

ATIS	BUFFALO APP CON	NIAGARA TOWER★	GND CON	CLNC DEL	UNICOM
120.8 269.4	126.5 317.6	118.5 (CTAF) 0 349.0	125.3 275.8	119.25 251.1	122.95



RADAR REQUIRED

ELEV 592	D	TDZE 586
----------	----------	----------

4 NM Holding Pattern

VGSI and RNAV glidepath not coincident (VGSI Angle 3.00/TCH 45).

3600 ZUPUV

GP 3.00° TCH 55

WOTGU

YULUC

ZEXOD 1.7 NM to RW06

RW06

*LNAV only

6.9 NM

3.5 NM

1.7 NM

CATEGORY

LPV DA

LNAV/VNAV DA

LNAV MDA

C CIRCLING

A

B

C

D

864-1

278 (300-1)

849-1

263 (300-1)

940-1

354 (400-1)

1100-1

508 (600-1)

1280-2

688 (700-2)

1280-2¼

688 (700-2¼)

TDZ/CL Rwy 28R

REIL Rws 6, 10R, 24, and 28L

HIRL Rwy 10L-28R

MIRL Rws 6-24 and 10R-28L