

LOC I-AG 110.1	APP CRS 280°	Rwy Idg TDZE Apt Elev	9129 588 592
--------------------------	------------------------	-----------------------------	---

ILS Z or LOC Z RWY 28R
NIAGARA FALLS INTL (IAG)

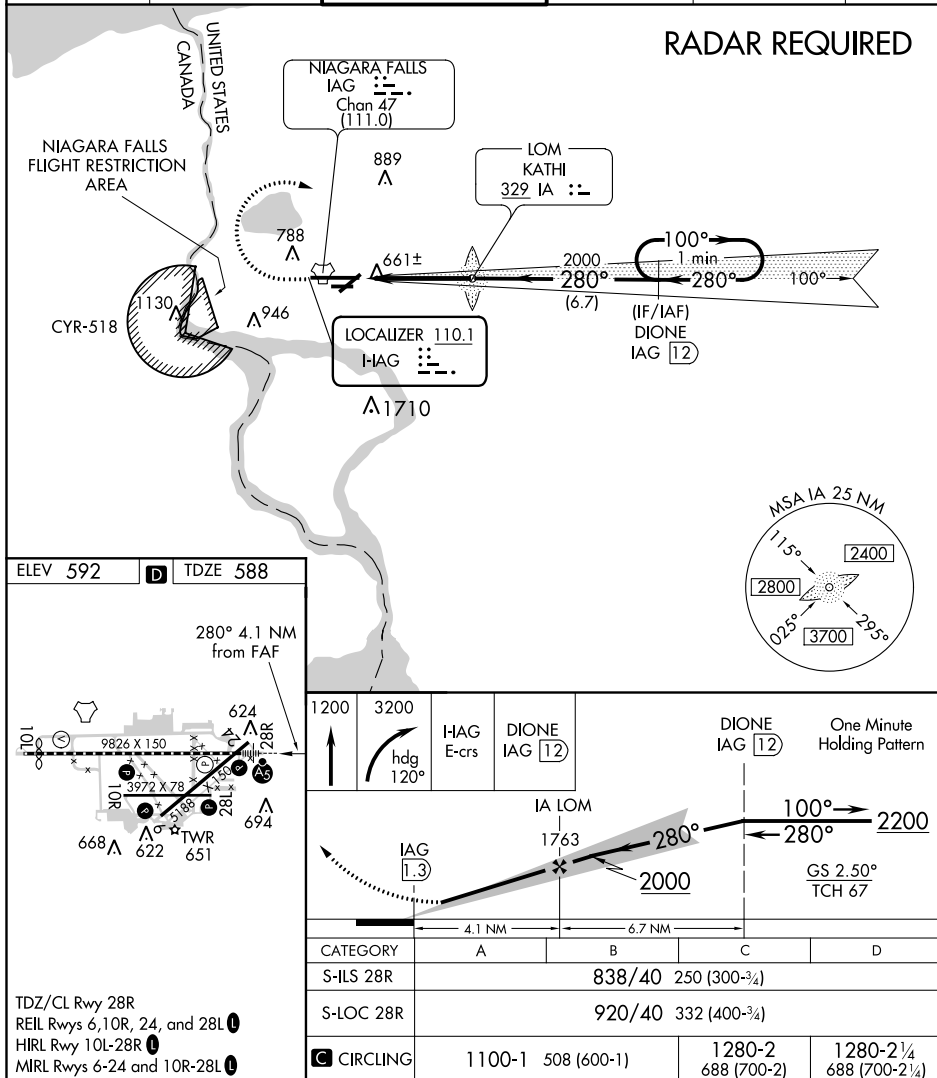
▼ When local altimeter setting not received, use Buffalo Niagara Intl altimeter setting and increase all DA 51 feet and all MDA 60 feet; increase Circling Cat C and D visibility $\frac{1}{4}$ SM. For inop MALSR, increase S-ILS 28R all Cats visibility to RVR 4500 and S-LOC 28R all Cats visibility to RVR 5000. For inop MALSR when using Buffalo Niagara Intl altimeter setting, increase S-ILS 28R all Cats visibility to RVR 4500, S-LOC 28R Cats A/B visibility to RVR 5000, and S-LOC 28R Cats C/D visibility to RVR 6000. DME required. Rwy 28R helicopter visibility reduction below $\frac{3}{4}$ SM NA. Rwy 6, 10R, 24, 28L, helicopter visibility reduction below 1 SM NA. Circling Rwy 6, 10R, 24, 28L NA at night.

MALSR



MISSED APPROACH: Climb to 1200 then climbing right turn to 3200 on heading 120° and I-AG E course to DIONE/ IAG 12 DME and hold.

ATIS	BUFFALO APP CON	NIAGARA TOWER★	GND CON	CLNC DEL	UNICOM
120.8 269.4	126.5 317.6	118.5 (CTAF) 0 349.0	125.3 275.8	119.25 251.1	122.95



NIAGARA FALLS, NEW YORK
Amdt 4B 18JUN20

43°06'N-78°57'W

NIAGARA FALLS INTL (IAG)

ILS Z or LOC Z RWY 28R