
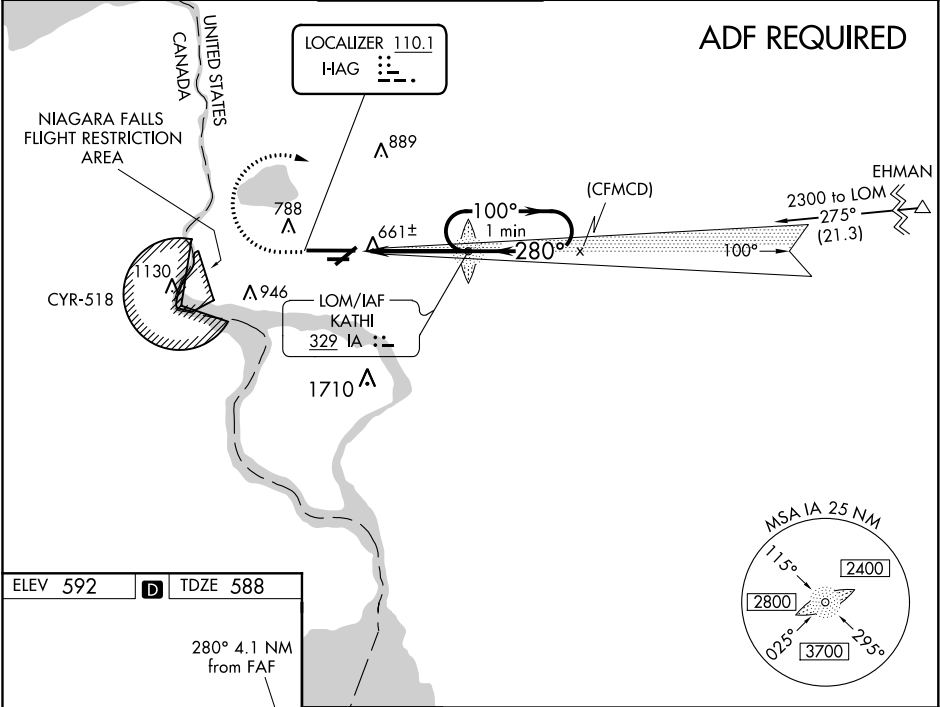
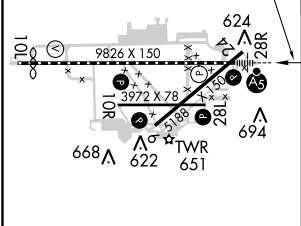


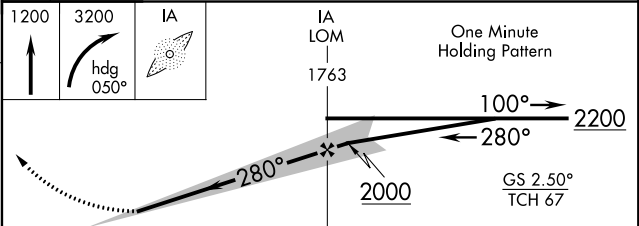
| | | | |
|-------------------|-------------|----------|-------------|
| LOC I- IAG | APP CRS | Rwy ldg | 9129 |
| 110.1 | 280° | TDZE | 588 |
| | | Apt Elev | 592 |

ILS Y or LOC Y RWY 28R
NIAGARA FALLS INTL (IAG)

| | | | | | |
|---|---------------------------------------|---|-------------------------------|---|-------------------------|
| <p>ADF Required. When local altimeter setting not received, use Buffalo Niagara Intl altimeter setting and increase all DA 51 feet and all MDA 60 feet; increase Circling Cat C and D visibility ¼ SM. For inop MALSR, increase S-ILS 28R all Cats visibility to RVR 4500 and S-LOC 28R all Cats visibility to RVR 5000. For inop MALSR when using Buffalo Niagara Intl altimeter setting, increase S-ILS 28R all Cats visibility to RVR 4500, S-LOC 28R Cats A/B visibility to RVR 5000, and S-LOC 28R Cats C/D visibility to RVR 6000. Rwy 28R helicopter visibility reduction below ¾ SM NA. Rwy 6, 10R, 24, 28L helicopter visibility reduction below 1 SM NA. Circling Rwy 6, 10R, 24, 28L NA at night.</p> | | | | <p>MALSR</p>  <p>MISSED APPROACH: Climb to 1200 then climbing right turn to 3200 on heading 050° then direct KATHI LOM and hold.</p> | |
| ATIS 120.8 269.4 | BUFFALO APP CON 126.5 317.6 | NIAGARA TOWER★ 118.5 (CTAF) 0 349.0 | GND CON 125.3 275.8 | CLNC DEL 119.25 251.1 | UNICOM 122.95 |



| | | |
|--|------|---------------------|
| ELEV 592 | D | TDZE 588 |
| <p>280° 4.1 NM from FAF</p>  | | |
| <p>TDZ/CL Rwy 28R REIL Rws 6, 10R, 24, and 28L HIRL Rwy 10L-28R MIRL Rws 6-24 and 10R-28L</p> | | |
| FAF to MAP 4.1 NM | | |
| Knots | 60 | 90 120 150 180 |
| Min:Sec | 4:06 | 2:44 2:03 1:38 1:22 |

| | | | | | |
|---|------|----|--------|------|----------------------------|
| 1200 | 3200 | IA | IA LOM | 1763 | One Minute Holding Pattern |
|  | | | | | |
| CATEGORY A B C D | | | | | |
| S-ILS 28R 838/40 250 (300-¾) | | | | | |
| S-LOC 28R 920/40 332 (400-¾) | | | | | |
| CIRCLING 1100-1 508 (600-1) 1280-2 688 (700-2) 1280-2 ¼ 688 (700-2 ¼) | | | | | |

ILS Y or LOC Y RWY 28R

NE-2, 31 DEC 2020 to 28 JAN 2021

NE-2, 31 DEC 2020 to 28 JAN 2021