

VOR/DME JFK	Rwy Idg	8400
115.9	TDZE	12
Chan 106	Apt Elev	13

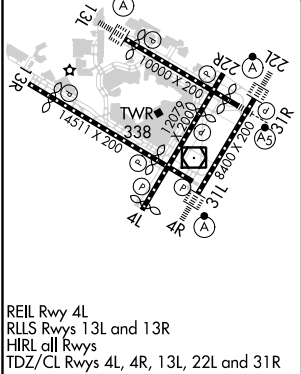
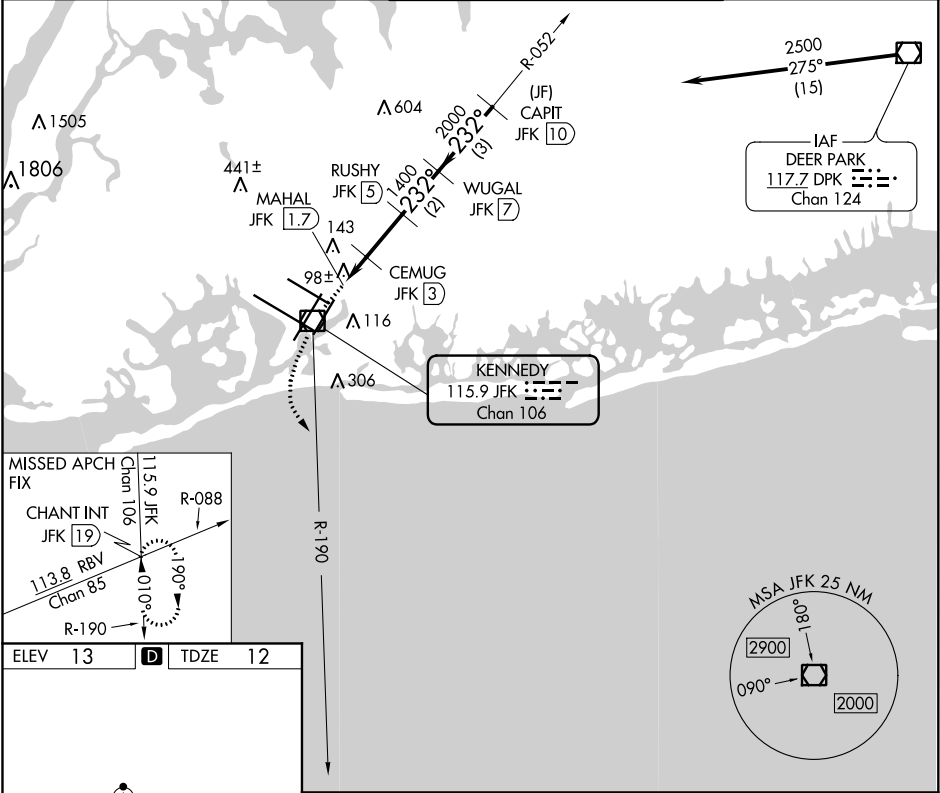
APP CRS  
232°

# VOR RWY 22L

JOHN F KENNEDY INTL (JFK)

DME required.	ALSF-2	MISSED APPROACH: Climbing left turn to 3000 on JFK VOR/DME R-190 to CHANT INT/19 DME and hold.
▼ Rwy 22L helicopter visibility reduction below 1 SM NA. For inop ALS, increase S-22L Cat A/B visibility to RVR 5500.		

D-ATIS (ARR/DEP) (ARR-NE) (ARR-SW)	NEW YORK APP CON	KENNEDY TOWER	GND CON	CLNC DEL	CPDLC
128.725 117.7 115.4	128.125 269.0	Rwys 4R/22L and 13L/31R 119.1 281.55 Rwys 4L/22R and 13R/31L 123.9 281.55	121.9 348.6	135.05 348.6	



3000 JFK R-190		CHANT INT		CEMUG JFK [3]		RUSHY JFK [5]		WUGAL JFK [7]		CAPIT JFK [10]	
MAHAL JFK [1.7]		JFK [2.4]		600		1400		2000		2500	
0.6		0.7		0.6		2 NM		2 NM		3 NM	
CATEGORY		A		B		C		D			
S-22L		440/40		428 (500-¾)				440/50		428 (500-1)	
CIRCLING		640-1		627 (700-1)		680-1¾ 667 (700-1¾)		680-2		667 (700-2)	

NE-2, 31 DEC 2020 to 28 JAN 2021

NE-2, 31 DEC 2020 to 28 JAN 2021