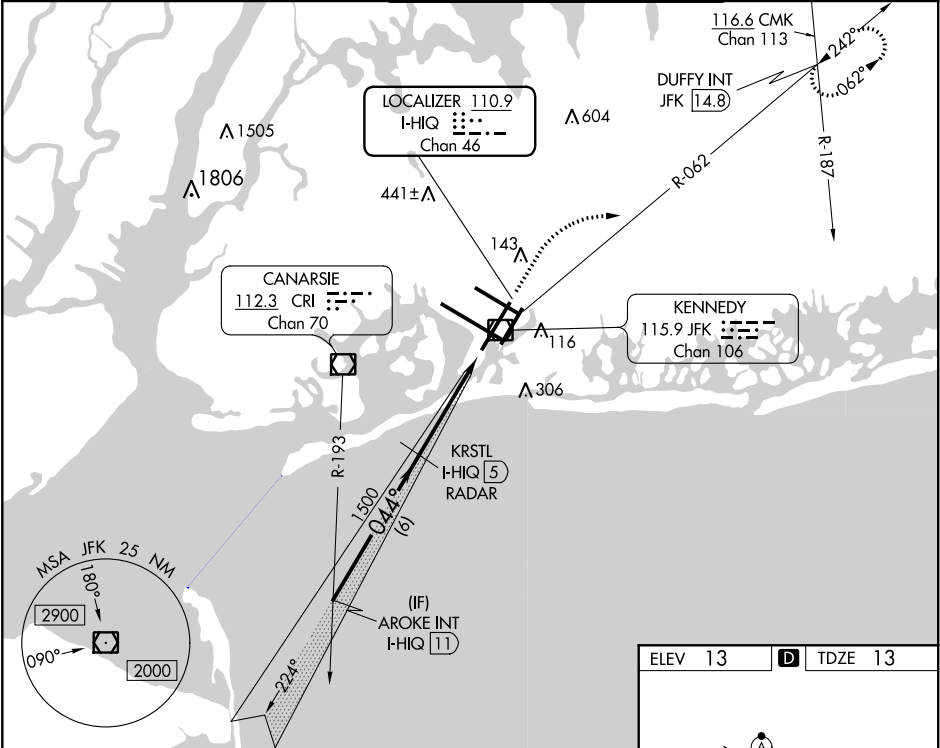


LOC/DME I-HIQ	APP CRS	Rwy Idg	11010
110.9	044°	TDZE	13
Chan 46		Apt Elev	13

ILS or LOC RWY 4L
JOHN F KENNEDY INTL (JFK)

RADAR required for procedure entry. DME or RADAR required for LOC only.	MISSED APPROACH: Climb to 2000 then climbing right turn to 3000 on JFK VOR/DME R-062 to DUFFY INT/JFK 14.8 DME and hold.
Simultaneous approach authorized.	

D-ATIS (ARR/DEP) (ARR-NE) (ARR-SW)	NEW YORK APP CON	KENNEDY TOWER Rwys 4R/22L and 13L/31R Rwys 4L/22R and 13R/31L	GND CON	CLNC DEL	CPDLC
128.725 117.7 115.4	128.125 269.0	119.1 281.55 123.9 281.55	121.9 348.6	135.05 348.6	



VGSI and ILS glidepath not coincident (VGSI Angle 3.00/TCH 75).			
2000 3000 DUFFY INT			
AROK INT I-HIQ 11 KRSTL I-HIQ 5 RADAR			
2000 1500 1500 1500			
GS 3.00° TCH 57			
6 NM 3.3 NM 1.2 NM			
CATEGORY	A	B	C
S-ILS 4L	223/40	210 (300-¾)	
S-LOC 4L	460/55	447 (500-1)	460-1¾ 447 (500-1¾)
CIRCLING	640-1	627 (700-1)	680-1¾ 667 (700-1¾) 680-2 667 (700-2)

